

For Research Use Only

# Rat E-Cadherin Recombinant antibody, PBS Only (Capture)

Catalog Number: 84646-1-PBS



## Basic Information

<b>Catalog Number:</b> 84646-1-PBS	<b>GenBank Accession Number:</b> NM_031334.1	<b>Purification Method:</b> Protein A purification
<b>Size:</b> 100ug, Concentration: 1 mg/ml by Nanodrop;	<b>GeneID (NCBI):</b> 83502	<b>CloneNo.:</b> 242018A8
<b>Source:</b> Rabbit	<b>UNIPROT ID:</b> Q9ROT4	
<b>Isotype:</b> IgG	<b>Full Name:</b> cadherin 1	
<b>Immunogen Catalog Number:</b> EG1229	<b>Calculated MW:</b> 99 kDa	

## Applications

**Tested Applications:**  
Cytometric bead array, Sandwich ELISA, Indirect ELISA,  
Sample test

**Species Specificity:**  
rat

## Product Information

84646-1-PBS targets E-Cadherin as part of a matched antibody pair:

MP01483-1: 84646-1-PBS capture and 84646-3-PBS detection (validated in Cytometric bead array, Sandwich ELISA)

Unconjugated rabbit recombinant monoclonal antibody in PBS only (BSA and azide free) storage buffer at a concentration of 1 mg/mL, ready for conjugation. Created using Proteintech's proprietary in-house recombinant technology. Recombinant production enables unrivalled batch-to-batch consistency, easy scale-up, and future security of supply.

This conjugation ready format makes antibodies ideal for use in many applications including: ELISAs, multiplex assays requiring matched pairs, mass cytometry, and multiplex imaging applications. Antibody use should be optimized by the end user for each application and assay.

## Storage

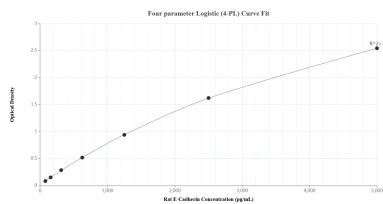
**Storage:**  
Store at -80°C.

**Storage Buffer:**  
PBS only, pH7.3

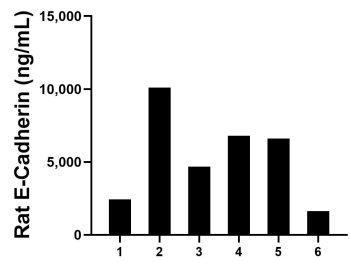
For technical support and original validation data for this product please contact:  
T: 1 (888) 4PTGLAB (1-888-478-4522) (toll free in USA), or 1(312) 455-8498 (outside USA)  
E: [proteintech@ptglab.com](mailto:proteintech@ptglab.com)  
W: [ptglab.com](http://ptglab.com)

This product is exclusively available under Proteintech Group brand and is not available to purchase from any other manufacturer.

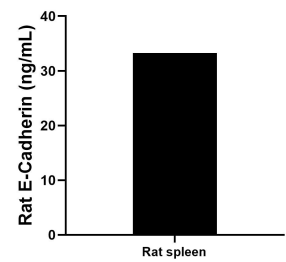
Selected Validation Data



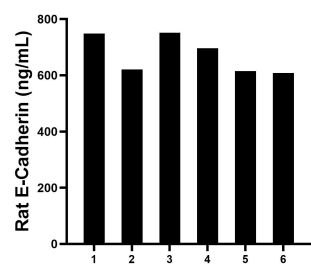
Sandwich ELISA standard curve of MP01483-1, Rat E-Cadherin Recombinant Matched Antibody Pair - PBS only. 84646-1-PBS was coated to a plate as the capture antibody and incubated with serial dilutions of standard Eg1229. 84646-3-PBS was HRP conjugated as the detection antibody. Range: 78.1-5000 pg/mL.



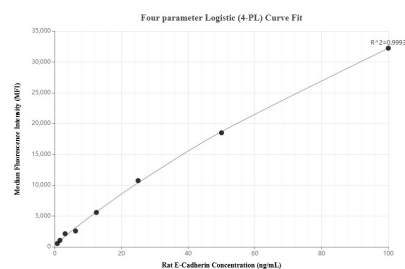
Urine of six rats was measured. The E-Cadherin concentration of detected samples was determined to be 5,367.9 ng/mL with a range of 1,627.0-10,091.3 ng/mL.



The mean E-Cadherin concentration was determined to be 33.3 ng/mL in rat spleen tissue extract based on a 2.7 mg/mL extract load.



Serum of six rats was measured. The E-Cadherin concentration of detected samples was determined to be 673.3 ng/mL with a range of 608.2-748.3 ng/mL.



Cytometric bead array standard curve of MP01483-1, RAT E-Cadherin Recombinant Matched Antibody Pair, PBS Only. Capture antibody: 84646-1-PBS. Detection antibody: 84646-3-PBS. Standard: Eg1229. Range: 0.781-100 ng/mL.