

For Research Use Only

Rat E-Cadherin Recombinant antibody, PBS Only

Catalog Number: 84646-4-PBS



Basic Information

Catalog Number: 84646-4-PBS	GenBank Accession Number: NM_031334.1	Purification Method: Protein A purification
Size: 100ug , Concentration: 1 mg/ml by Nanodrop;	GeneID (NCBI): 83502	CloneNo.: 242018C10
Source: Rabbit	UNIPROT ID: Q9ROT4	
Isotype: IgG	Full Name: cadherin 1	
	Calculated MW: 99 kDa	
	Observed MW: 130 kDa	

Applications

Tested Applications:
WB, IHC, Indirect ELISA

Species Specificity:
human, mouse, rat

Background Information

Cadherins are a family of transmembrane glycoproteins that mediate calcium-dependent cell-cell adhesion and play an important role in the maintenance of normal tissue architecture. E-cadherin (epithelial cadherin), also known as CDH1 (cadherin 1) or CAM 120/80, is a classical member of the cadherin superfamily which also include N-, P-, R-, and B-cadherins. E-cadherin is expressed on the cell surface in most epithelial tissues. The extracellular region of E-cadherin establishes calcium-dependent homophilic trans binding, providing specific interaction with adjacent cells, while the cytoplasmic domain is connected to the actin cytoskeleton through the interaction with p120-, α -, β -, and γ -catenin (plakoglobin). E-cadherin is important in the maintenance of the epithelial integrity, and is involved in mechanisms regulating proliferation, differentiation, and survival of epithelial cell. E-cadherin may also play a role in tumorigenesis. It is considered to be an invasion suppressor protein and its loss is an indicator of high tumor aggressiveness.

Storage

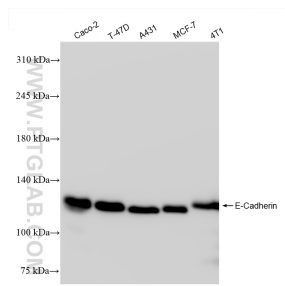
Storage:
Store at -80°C.

Storage Buffer:
PBS Only

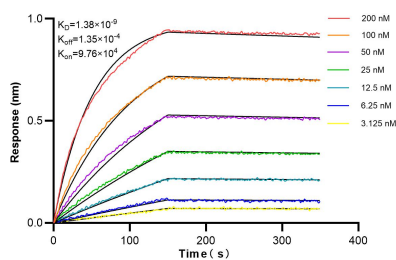
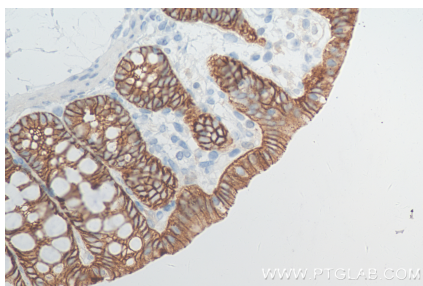
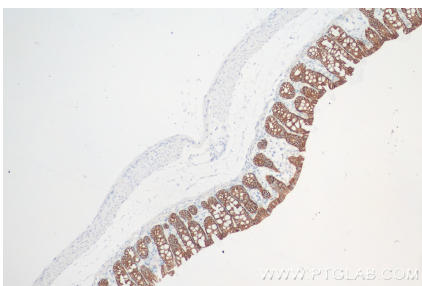
For technical support and original validation data for this product please contact:
T: 1 (888) 4PTGLAB (1-888-478-4522) (toll free in USA), or 1(312) 455-8498 (outside USA)
E: proteintech@ptglab.com
W: ptglab.com

This product is exclusively available under Proteintech Group brand and is not available to purchase from any other manufacturer.

Selected Validation Data



Various lysates were subjected to SDS PAGE followed by western blot with 84646-4-RR (E-Cadherin antibody) at dilution of 1:10000 incubated at room temperature for 1.5 hours. This data was developed using the same antibody clone with 84646-4-PBS in a different storage buffer formulation.



Biolayer interferometry (BLI) kinetic assays of 84646-4-RR against Rat E-Cadherin were performed. The affinity constant is 1.38 nM.