

For Research Use Only

EPCR/CD201 Recombinant antibody, PBS Only (Capture)

Catalog Number: 84648-3-PBS



Basic Information

Catalog Number: 84648-3-PBS	GenBank Accession Number: BC014451	Purification Method: Protein A purification
Size: 100ug, Concentration: 1 mg/ml by Nanodrop;	GeneID (NCBI): 10544	CloneNo.: 241806D12
Source: Rabbit	UNIPROT ID: Q9UNN8	
Isotype: IgG	Full Name: protein C receptor, endothelial (EPCR)	
	Calculated MW: 238 aa, 27 kDa	

Applications

Tested Applications:
Cytometric bead array, Sandwich ELISA, Indirect ELISA,
Sample test

Species Specificity:
human

Product Information

84648-3-PBS targets EPCR/CD201 as part of a matched antibody pair.

MP01480-1: 84648-3-PBS capture and 84648-1-PBS detection (validated in Cytometric bead array, Sandwich ELISA)

Unconjugated rabbit recombinant monoclonal antibody in PBS only (BSA and azide free) storage buffer at a concentration of 1 mg/mL, ready for conjugation. Created using Proteintech's proprietary in-house recombinant technology. Recombinant production enables unrivalled batch-to-batch consistency, easy scale-up, and future security of supply.

This conjugation ready format makes antibodies ideal for use in many applications including: ELISAs, multiplex assays requiring matched pairs, mass cytometry, and multiplex imaging applications. Antibody use should be optimized by the end user for each application and assay.

Storage

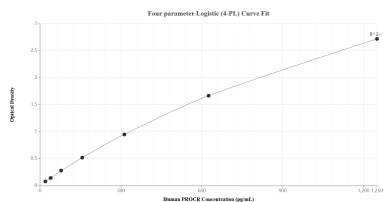
Storage:
Store at -80°C.

Storage Buffer:
PBS Only

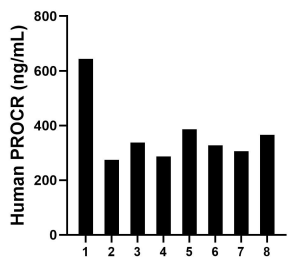
For technical support and original validation data for this product please contact:
T: 1 (888) 4PTGLAB (1-888-478-4522) (toll free in USA), or 1(312) 455-8498 (outside USA)
E: proteintech@ptglab.com
W: ptglab.com

This product is exclusively available under Proteintech Group brand and is not available to purchase from any other manufacturer.

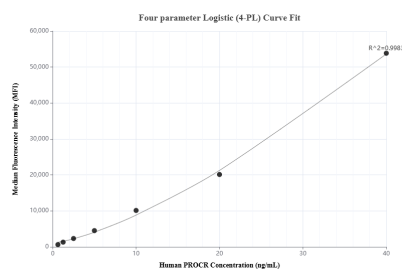
Selected Validation Data



Sandwich ELISA standard curve of MP01480-1, Human PROCR Recombinant Matched Antibody Pair - PBS only. 84648-3-PBS was coated to a plate as the capture antibody and incubated with serial dilutions of standard Eg2339. 84648-1-PBS was HRP conjugated as the detection antibody. Range: 19.5-1250 pg/mL.



Plasma of eight individual healthy human donors was measured. The PROCR concentration of detected samples was determined to be 366.0 ng/mL with a range of 274.3-643.4 ng/mL.



Cytometric bead array standard curve of MP01480-1, PROCR Recombinant Matched Antibody Pair, PBS Only. Capture antibody: 84648-3-PBS. Detection antibody: 84648-1-PBS. Standard: Eg2339. Range: 0.625-40 ng/mL.