

For Research Use Only

Ubiquilin 1 Recombinant antibody, PBS Only (Capture)

Catalog Number: 84649-2-PBS



Basic Information

Catalog Number: 84649-2-PBS	GenBank Accession Number: BC010066	Purification Method: Protein A purification
Size: 100ug , Concentration: 1 mg/ml by Nanodrop;	GeneID (NCBI): 29979	CloneNo.: 242092E9
Source: Rabbit	UNIPROT ID: Q9UMX0	
Isotype: IgG	Full Name: ubiquilin 1	
Immunogen Catalog Number: AG17530	Calculated MW: 589 aa, 63 kDa	
	Observed MW: 63-71 kDa	

Applications

Tested Applications:
WB, IF/ICC, Cytometric bead array, Indirect ELISA

Species Specificity:
human

Product Information

84649-2-PBS targets Ubiquilin 1 as part of a matched antibody pair:

MP01462-1: 84649-2-PBS capture and 84649-1-PBS detection (validated in Cytometric bead array)

MP01462-2: 84649-2-PBS capture and 84649-3-PBS detection (validated in Cytometric bead array)

Unconjugated rabbit recombinant monoclonal antibody in PBS only (BSA and azide free) storage buffer at a concentration of 1 mg/mL, ready for conjugation. Created using Proteintech's proprietary in-house recombinant technology. Recombinant production enables unrivalled batch-to-batch consistency, easy scale-up, and future security of supply.

This conjugation ready format makes antibodies ideal for use in many applications including: ELISAs, multiplex assays requiring matched pairs, mass cytometry, and multiplex imaging applications. Antibody use should be optimized by the end user for each application and assay.

Background Information

UBQLN1, also known as DSK2 or Ubiquilin 1, is an ubiquitin-like protein. It contains a N-terminal ubiquitin-like domain and a C-terminal ubiquitin-associated domain. They physically associate with both proteasomes and ubiquitin ligases, and thus are thought to functionally link the ubiquitination machinery to the proteasome to affect in vivo protein degradation. Ubiquilin has also been shown to modulate accumulation of presenilin proteins, and is found in lesions associated with Alzheimer's and Parkinson's disease. Two transcript variants encoding different isoforms have been found for this gene. Higher levels of ubiquilin-1 in the brain decreased malformation of the APP molecule which plays a key role in triggering Alzheimer's disease. Conversely, lower levels of ubiquilin-1 in the brain were associated with increased malformation of APP (PMID: 21852239). This antibody detects 70kD band of UBQLN1.

Storage

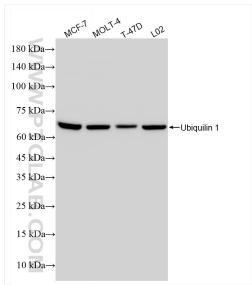
Storage:
Store at -80°C.

Storage Buffer:
PBS Only

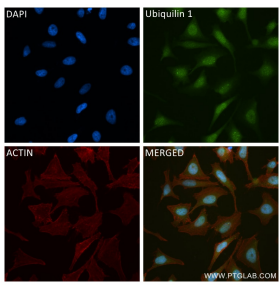
For technical support and original validation data for this product please contact:
T: 1 (888) 4PTGLAB (1-888-478-4522) (toll free in USA), or 1(312) 455-8498 (outside USA)
E: proteintech@ptglab.com
W: ptglab.com

This product is exclusively available under Proteintech Group brand and is not available to purchase from any other manufacturer.

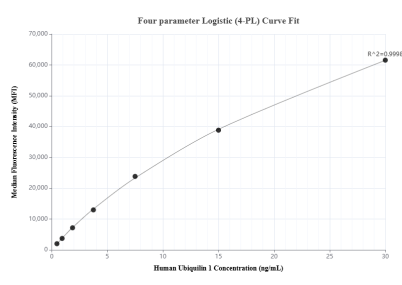
Selected Validation Data



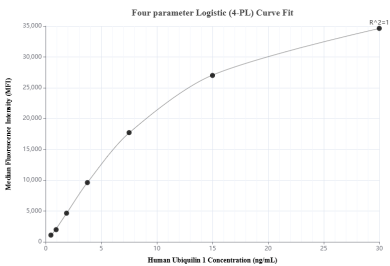
Various lysates were subjected to SDS PAGE followed by western blot with 84649-2-RR (Ubiquilin 1 antibody) at dilution of 1:10000 incubated at room temperature for 1.5 hours. This data was developed using the same antibody clone with 84649-2-PBS in a different storage buffer formulation.



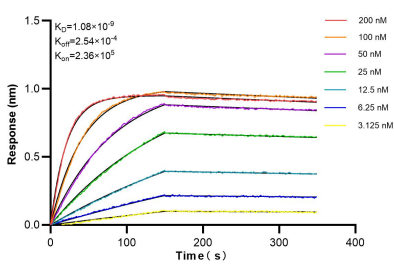
Immunofluorescent analysis of (4% PFA) fixed HeLa cells using Ubiquilin 1 antibody (84649-2-RR, Clone: 242092E9) at dilution of 1:250 and CoraLite®488-Conjugated Goat Anti-Rabbit IgG(H+L) (SA00013-2), CL594-Phalloidin (red). This data was developed using the same antibody clone with 84649-2-PBS in a different storage buffer formulation.



Cytometric bead array standard curve of MP01462-1, Ubiquilin 1 Recombinant Matched Antibody Pair, PBS Only. Capture antibody: 84649-2-PBS. Detection antibody: 84649-1-PBS. Standard:Ag17530. Range: 0.469-30 ng/mL



Cytometric bead array standard curve of MP01462-2, Ubiquilin 1 Recombinant Matched Antibody Pair, PBS Only. Capture antibody: 84649-2-PBS. Detection antibody: 84649-3-PBS. Standard: Ag17530. Range: 0.469-30 ng/mL



Biolayer interferometry (BLI) kinetic assays of 84649-2-RR against Human Ubiquilin 1 were performed. The affinity constant is 1.08 nM.