

For Research Use Only

AXL Recombinant antibody, PBS Only (Detector)

Catalog Number: 84659-3-PBS



Basic Information

Catalog Number: 84659-3-PBS	GenBank Accession Number: NM_021913.4	Purification Method: Protein A purification
Size: 100ug , Concentration: 1 mg/ml by Nanodrop;	GeneID (NCBI): 558	CloneNo.: 242014C1
Source: Rabbit	UNIPROT ID: P30530-1	
Isotype: IgG	Full Name: AXL receptor tyrosine kinase	
	Calculated MW: 98kDa	

Applications

Tested Applications:
Cytometric bead array, Sandwich ELISA, Indirect ELISA, Sample test

Species Specificity:
human

Product Information

84659-3-PBS targets AXL as part of a matched antibody pair:

MP01487-1: 84659-2-PBS capture and 84659-3-PBS detection (validated in Cytometric bead array)

MP01487-3: 84659-5-PBS capture and 84659-3-PBS detection (validated in Sandwich ELISA)

Unconjugated rabbit recombinant monoclonal antibody in PBS only (BSA and azide free) storage buffer at a concentration of 1 mg/mL, ready for conjugation. Created using Proteintech's proprietary in-house recombinant technology. Recombinant production enables unrivalled batch-to-batch consistency, easy scale-up, and future security of supply.

This conjugation ready format makes antibodies ideal for use in many applications including: ELISAs, multiplex assays requiring matched pairs, mass cytometry, and multiplex imaging applications. Antibody use should be optimized by the end user for each application and assay.

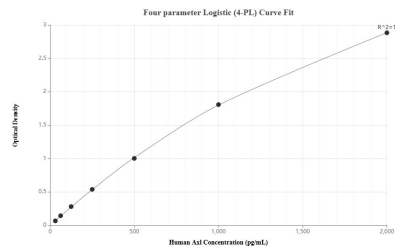
Storage

Storage:
Store at -80°C.
Storage Buffer:
PBS Only

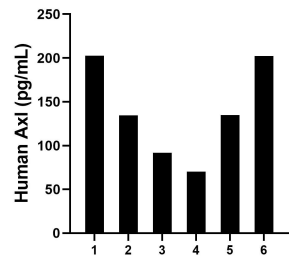
For technical support and original validation data for this product please contact:
T: 1 (888) 4PTGLAB (1-888-478-4522) (toll free in USA), or 1(312) 455-8498 (outside USA)
E: proteintech@ptglab.com
W: ptglab.com

This product is exclusively available under Proteintech Group brand and is not available to purchase from any other manufacturer.

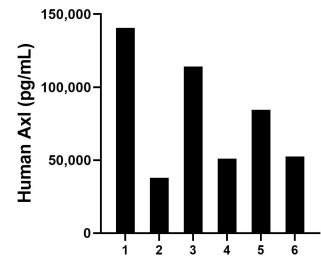
Selected Validation Data



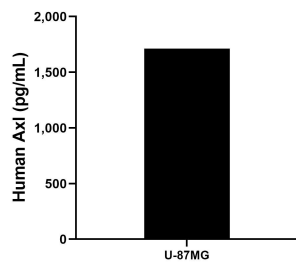
Sandwich ELISA standard curve of MP01487-3, Human Axl Recombinant Matched Antibody Pair - PBS only. 84659-5-PBS was coated to a plate as the capture antibody and incubated with serial dilutions of standard Eg1618. 84659-3-PBS was HRP conjugated as the detection antibody. Range: 31.25-2000 pg/mL



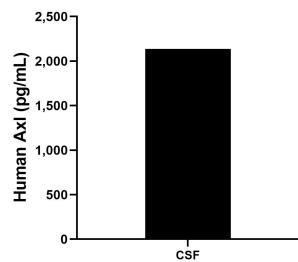
Saliva of six individual healthy human donors was measured. The human Axl concentration of detected samples was determined to be 139.3 pg/mL with a range of 70.3 - 202.4 pg/mL



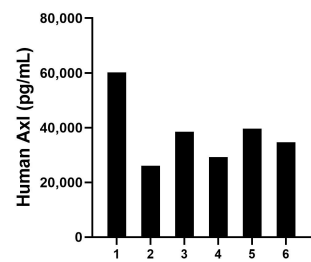
Urine of six individual healthy human donors was measured. The human Axl concentration of detected samples was determined to be 80,064.8 pg/mL with a range of 37,803.8 - 140,502.0 pg/mL



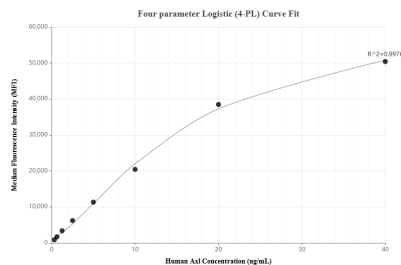
U-87 MG human glioblastoma/astrocytoma cells were cultured in MEM supplemented with 10% fetal bovine serum, 2 mM L-glutamine, 100 U/mL penicillin, 100 µg/mL streptomycin sulfate, and 1 mM sodium pyruvate, until confluent. An aliquot of the cell culture supernate was removed, assayed for human Axl, and measured 1,712.6 pg/mL



Cerebrospinal fluid of one human donor was measured. The Axl concentration of detected samples was determined to be 2,138.1 pg/mL



Serum of six individual healthy human donors was measured. The human Axl concentration of detected samples was determined to be 38,035.1 pg/mL with a range of 26,053.7 - 60,164.0 pg/mL



Cytometric bead array standard curve of MP01487-1, AXL Recombinant Matched Antibody Pair, PBS Only. Capture antibody: 84659-2-PBS. Detection antibody: 84659-3-PBS. Standard: Eg1618. Range: 0.313-40 ng/mL