

For Research Use Only

# FceR1a Recombinant monoclonal antibody, PBS Only

Catalog Number: 84662-4-PBS



## Basic Information

<b>Catalog Number:</b> 84662-4-PBS	<b>GenBank Accession Number:</b> NM_001387280.1	<b>Purification Method:</b> Protein A purification
<b>Size:</b> 100ug, Concentration: 1 mg/ml by Nanodrop;	<b>GeneID (NCBI):</b> 2205	<b>CloneNo.:</b> 241848D6
<b>Source:</b> Rabbit	<b>UNIPROT ID:</b> P12319	
<b>Isotype:</b> IgG	<b>Full Name:</b> Fc fragment of IgE, high affinity I, receptor for; alpha polypeptide	
<b>Immunogen Catalog Number:</b> EG2022	<b>Calculated MW:</b> 30 kDa	
	<b>Observed MW:</b> 45-55 kDa	

## Applications

**Tested Applications:**  
WB, Indirect ELISA

**Species Specificity:**  
human, mouse

## Background Information

Fc epsilon Receptor I alpha (FceR1a) is a single-pass type I membrane protein that contains 2 immunoglobulin-like domains. FceR1a forms a tetrameric complex, FceRI, with one beta and two gamma subunits (PMID: 19406478). FceRI is the high-affinity receptor for the Fc region of immunoglobulin E (IgE) (PMID: 1532373). It is expressed on mast cells and basophils and plays a central role in the allergic response (PMID: 2148316). The calculated molecular weight of FceR1a is 30 kDa, the 45- to 55-kDa bands detected by this antibody are probably caused by heterogeneous glycosylation.

## Storage

**Storage:**  
Store at -80°C.

**Storage Buffer:**  
PBS only, pH7.3

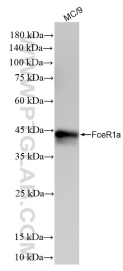
For technical support and original validation data for this product please contact:

T: 1 (888) 4PTGLAB (1-888-478-4522) (toll free in USA), or 1(312) 455-8498 (outside USA)

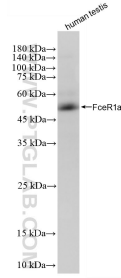
E: [proteintech@ptglab.com](mailto:proteintech@ptglab.com)  
W: [ptglab.com](http://ptglab.com)

**This product is exclusively available under Proteintech Group brand and is not available to purchase from any other manufacturer.**

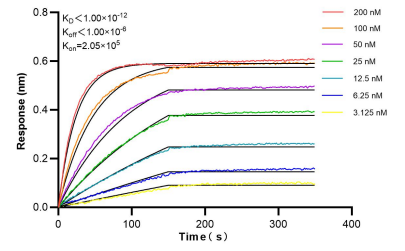
## Selected Validation Data



MC/9 cells were subjected to SDS PAGE followed by western blot with 84662-4-RR (Fc epsilon RI alpha antibody) at dilution of 1:1000 incubated at room temperature for 1.5 hours. This data was developed using the same antibody clone with 84662-4-PBS in a different storage buffer formulation.



human testis tissue were subjected to SDS PAGE followed by western blot with 84662-4-RR (FceR1a antibody) at dilution of 1:1000 incubated at room temperature for 1.5 hours. This data was developed using the same antibody clone with 84662-4-PBS in a different storage buffer formulation.



Bi-layer interferometry (BLI) kinetic assays of 84662-4-RR against Human FceR1a were performed. The affinity constant is below 1 pM.