

For Research Use Only

FceR1a Recombinant monoclonal antibody

Catalog Number:84662-4-RR



Basic Information

Catalog Number: 84662-4-RR	GenBank Accession Number: NM_001387280.1	Purification Method: Protein A purification
Size: 100ul , Concentration: 1000 µg/ml by Nanodrop;	GeneID (NCBI): 2205	CloneNo.: 241848D6
Source: Rabbit	UNIPROT ID: P12319	Recommended Dilutions: WB: 1:500-1:2000
Isotype: IgG	Full Name: Fc fragment of IgE, high affinity I, receptor for; alpha polypeptide	
Immunogen Catalog Number: EG2022	Calculated MW: 30 kDa	
	Observed MW: 45-55 kDa	

Applications

Tested Applications: WB, ELISA	Positive Controls: WB : MC/9 cells, human testis tissue, KU812 cells
Species Specificity: human, mouse	

Background Information

Fc epsilon Receptor I alpha (FceR1a) is a single-pass type I membrane protein that contains 2 immunoglobulin-like domains. FceR1a forms a tetrameric complex, FceRI, with one beta and two gamma subunits (PMID: 19406478). FceRI is the high-affinity receptor for the Fc region of immunoglobulin E (IgE) (PMID: 1532373). It is expressed on mast cells and basophils and plays a central role in the allergic response (PMID: 2148316). The calculated molecular weight of FceR1a is 30 kDa, the 45- to 55-kDa bands detected by this antibody are probably caused by heterogeneous glycosylation.

Storage

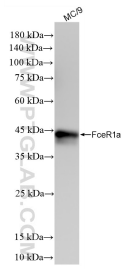
Storage:
Store at -20°C. Stable for one year after shipment.
Storage Buffer:
PBS with 0.02% sodium azide and 50% glycerol, pH7.3
Aliquoting is unnecessary for -20°C storage

*** 20ul sizes contain 0.1%BSA

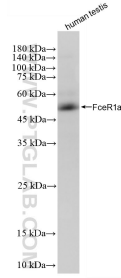
For technical support and original validation data for this product please contact:
T: 1 (888) 4PTGLAB (1-888-478-4522) (toll free in USA), or 1(312) 455-8498 (outside USA)
E: proteintech@ptglab.com
W: ptglab.com

This product is exclusively available under Proteintech Group brand and is not available to purchase from any other manufacturer.

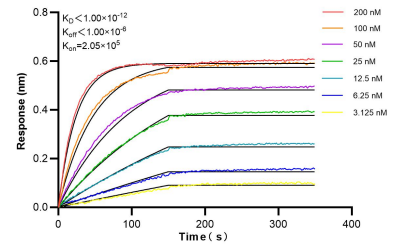
Selected Validation Data



MC/9 cells were subjected to SDS PAGE followed by western blot with 84662-4-RR (Fc epsilon RI alpha antibody) at dilution of 1:1000 incubated at room temperature for 1.5 hours.



human testis tissue were subjected to SDS PAGE followed by western blot with 84662-4-RR (FceR1a antibody) at dilution of 1:1000 incubated at room temperature for 1.5 hours.



Biolayer interferometry (BLI) kinetic assays of 84662-4-RR against Human FceR1a were performed. The affinity constant is below 1 pM.