

For Research Use Only

FceR1a Recombinant monoclonal antibody, PBS Only (Detector)

Catalog Number: 84662-5-PBS



Basic Information

Catalog Number: 84662-5-PBS	GenBank Accession Number: NM_001387280.1	Purification Method: Protein A purification
Size: 100ug, Concentration: 1 mg/ml by Nanodrop;	GeneID (NCBI): 2205	CloneNo.: 260244E8
Source: Rabbit	UNIPROT ID: P12319	
Isotype: IgG	Full Name: Fc fragment of IgE, high affinity I, receptor for; alpha polypeptide	
Immunogen Catalog Number: EG2022	Calculated MW: 30 kDa	

Applications

Tested Applications:
Sandwich ELISA, Indirect ELISA

Species Specificity:
human

Product Information

84662-5-PBS targets FceR1a as part of a matched antibody pair:

MP01477-2: 84662-6-PBS capture and 84662-5-PBS detection (validated in Sandwich ELISA)

Unconjugated rabbit recombinant monoclonal antibody in PBS only (BSA and azide free) storage buffer at a concentration of 1 mg/mL, ready for conjugation. Created using Proteintech's proprietary in-house recombinant technology. Recombinant production enables unrivalled batch-to-batch consistency, easy scale-up, and future security of supply.

This conjugation ready format makes antibodies ideal for use in many applications including: ELISAs, multiplex assays requiring matched pairs, mass cytometry, and multiplex imaging applications. Antibody use should be optimized by the end user for each application and assay.

Storage

Storage:
Store at -80°C.

Storage Buffer:
PBS only, pH7.3

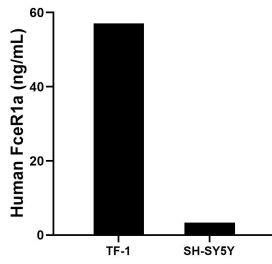
For technical support and original validation data for this product please contact:

T: 1 (888) 4PTGLAB (1-888-478-4522) (toll free in USA), or 1(312) 455-8498 (outside USA)

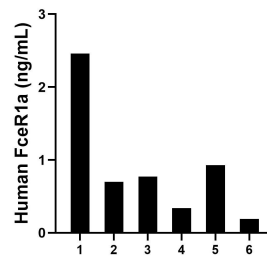
E: proteintech@ptglab.com
W: ptglab.com

This product is exclusively available under Proteintech Group brand and is not available to purchase from any other manufacturer.

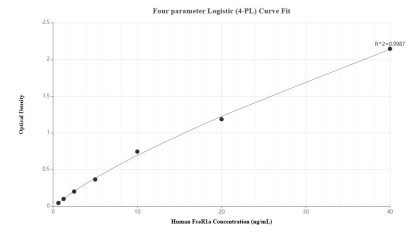
Selected Validation Data



The mean FceR1a concentration was determined to be 57.10 ng/mL in TF-1 cell extract based on a 4.0 mg/mL extract load and 3.40 ng/mL in SH-SY5Y cell extract based on a 1.2 mg/mL extract load.



Plasma of six individual healthy human donors was measured. The human FceR1a concentration of detected samples was determined to be 0.90 ng/mL with a range of 0.19 - 2.46 ng/mL.



Sandwich ELISA standard curve of MP01477-2, Human FceR1a Recombinant Matched Antibody Pair - PBS only. 84662-6-PBS was coated to a plate as the capture antibody and incubated with serial dilutions of standard Eg2022. 84662-5-PBS was HRP conjugated as the detection antibody. Range: 0.625-40 ng/mL