

For Research Use Only

# Fc epsilon RI alpha Recombinant monoclonal antibody, PBS Only (Capture)

Catalog Number: 84662-6-PBS



## Basic Information

<b>Catalog Number:</b> 84662-6-PBS	<b>GenBank Accession Number:</b> NM_001387280.1	<b>Purification Method:</b> Protein A purification
<b>Size:</b> 100ug , Concentration: 1 mg/ml by Nanodrop;	<b>GeneID (NCBI):</b> 2205	<b>CloneNo.:</b> 260244G2
<b>Source:</b> Rabbit	<b>UNIPROT ID:</b> P12319	
<b>Isotype:</b> IgG	<b>Full Name:</b> Fc fragment of IgE, high affinity I, receptor for; alpha polypeptide	
<b>Immunogen Catalog Number:</b> EG2022	<b>Calculated MW:</b> 30 kDa	

## Applications

**Tested Applications:**  
Sandwich ELISA, Indirect ELISA

**Species Specificity:**  
human

## Product Information

84662-6-PBS targets Fc epsilon RI alpha as part of a matched antibody pair:

MP01477-2: 84662-6-PBS capture and 84662-5-PBS detection (validated in Sandwich ELISA)

Unconjugated rabbit recombinant monoclonal antibody in PBS only (BSA and azide free) storage buffer at a concentration of 1 mg/mL, ready for conjugation. Created using Proteintech's proprietary in-house recombinant technology. Recombinant production enables unrivalled batch-to-batch consistency, easy scale-up, and future security of supply.

This conjugation ready format makes antibodies ideal for use in many applications including: ELISAs, multiplex assays requiring matched pairs, mass cytometry, and multiplex imaging applications. Antibody use should be optimized by the end user for each application and assay.

## Storage

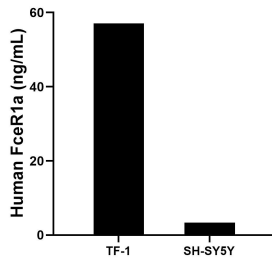
**Storage:**  
Store at -80°C.

**Storage Buffer:**  
PBS only, pH7.3

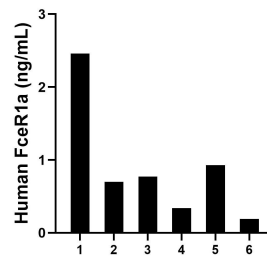
For technical support and original validation data for this product please contact:  
T: 1 (888) 4PTGLAB (1-888-478-4522) (toll free in USA), or 1(312) 455-8498 (outside USA)      E: [proteintech@ptglab.com](mailto:proteintech@ptglab.com)      W: [ptglab.com](http://ptglab.com)

**This product is exclusively available under Proteintech Group brand and is not available to purchase from any other manufacturer.**

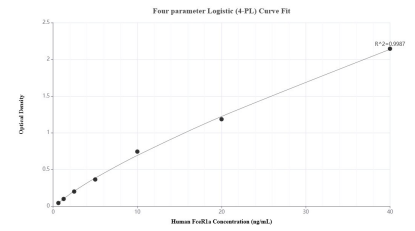
## Selected Validation Data



The mean FceR1a concentration was determined to be 57.10 ng/mL in TF-1 cell extract based on a 4.0 mg/mL extract load and 3.40 ng/mL in SH-SY5Y cell extract based on a 1.2 mg/mL extract load.



Plasma of six individual healthy human donors was measured. The human FceR1a concentration of detected samples was determined to be 0.90 ng/mL with a range of 0.19 - 2.46 ng/mL.



Sandwich ELISA standard curve of MP01477-2, Human FceR1a Recombinant Matched Antibody Pair - PBS only. 84662-6-PBS was coated to a plate as the capture antibody and incubated with serial dilutions of standard Eg2022. 84662-5-PBS was HRP conjugated as the detection antibody. Range: 0.625-40 ng/mL