

For Research Use Only

# COMMD4 Recombinant antibody, PBS Only (Capture)

Catalog Number: 84664-3-PBS



## Basic Information

<b>Catalog Number:</b> 84664-3-PBS	<b>GenBank Accession Number:</b> BC068998	<b>Purification Method:</b> Protein A purification
<b>Size:</b> 100ug , Concentration: 1 mg/ml by Nanodrop;	<b>GeneID (NCBI):</b> 54939	<b>CloneNo.:</b> 242175E4
<b>Source:</b> Rabbit	<b>UNIPROT ID:</b> Q9H0A8	
<b>Isotype:</b> IgG	<b>Full Name:</b> COMM domain containing 4	
<b>Immunogen Catalog Number:</b> AG34904	<b>Observed MW:</b> 22 kDa	

## Applications

**Tested Applications:**  
WB, Cytometric bead array, Indirect ELISA

**Species Specificity:**  
human

## Product Information

84664-3-PBS targets COMMD4 as part of a matched antibody pair:

MP01475-1: 84664-3-PBS capture and 84664-2-PBS detection (validated in Cytometric bead array)

MP01475-2: 84664-3-PBS capture and 84664-1-PBS detection (validated in Cytometric bead array)

Unconjugated rabbit recombinant monoclonal antibody in PBS only (BSA and azide free) storage buffer at a concentration of 1 mg/mL, ready for conjugation. Created using Proteintech's proprietary in-house recombinant technology. Recombinant production enables unrivalled batch-to-batch consistency, easy scale-up, and future security of supply.

This conjugation ready format makes antibodies ideal for use in many applications including: ELISAs, multiplex assays requiring matched pairs, mass cytometry, and multiplex imaging applications. Antibody use should be optimized by the end user for each application and assay.

## Background Information

COMMD4 is a protein-coding gene belonging to the COMMD family and is highly expressed in non-small cell lung cancer (NSCLC) and hepatocellular carcinoma (HCC) (PMID: 36249824). It has 3 isoforms and has been shown to control NF- $\kappa$ B activity and regulate the activity of cullin-RING E3 ubiquitin ligases (PMID: 32439936).

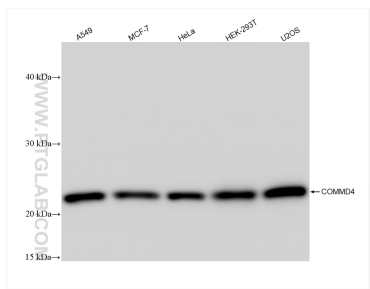
## Storage

**Storage:**  
Store at -80°C.  
**Storage Buffer:**  
PBS Only

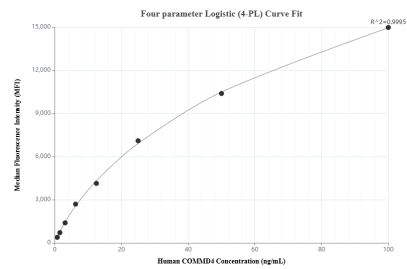
For technical support and original validation data for this product please contact:  
T: 1 (888) 4PTGLAB (1-888-478-4522) (toll free in USA), or 1(312) 455-8498 (outside USA)  
E: [proteintech@ptglab.com](mailto:proteintech@ptglab.com)  
W: [ptglab.com](http://ptglab.com)

This product is exclusively available under Proteintech Group brand and is not available to purchase from any other manufacturer.

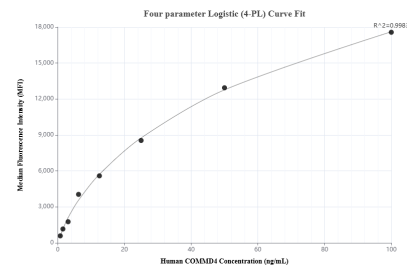
## Selected Validation Data



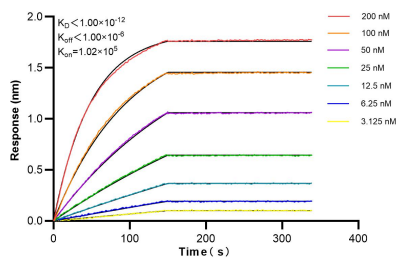
Various lysates were subjected to SDS PAGE followed by western blot with 84664-3-RR (COMMD4 antibody) at dilution of 1:5000 incubated at room temperature for 1.5 hours. This data was developed using the same antibody clone with 84664-3-PBS in a different storage buffer formulation.



Cytometric bead array standard curve of MP01475-2, COMMD4 Recombinant Matched Antibody Pair, PBS Only. Capture antibody: 84664-3-PBS. Detection antibody: 84664-1-PBS. Standard: Ag34904. Range: 0.781-100 ng/mL.



Cytometric bead array standard curve of MP01475-1, COMMD4 Recombinant Matched Antibody Pair, PBS Only. Capture antibody: 84664-3-PBS. Detection antibody: 84664-2-PBS. Standard: Ag34904. Range: 0.781-100 ng/mL.



Biolayer interferometry (BLI) kinetic assays of 84664-3-RR against Human COMMD4 were performed. The affinity constant is below 1 pM.