

For Research Use Only

KAT2A/GCN5 Recombinant antibody, PBS Only (Capture)

Catalog Number: 84669-2-PBS



Basic Information

Catalog Number: 84669-2-PBS	GenBank Accession Number: BC032743	Purification Method: Protein A purification
Size: 100ug , Concentration: 1 mg/ml by Nanodrop;	GeneID (NCBI): 2648	CloneNo.: 242113C7
Source: Rabbit	UNIPROT ID: Q92830	
Isotype: IgG	Full Name: K(lysine) acetyltransferase 2A	
Immunogen Catalog Number: AG29005	Calculated MW: 94 kDa	
	Observed MW: 94 kDa	

Applications

Tested Applications:
WB, IF/ICC, FC (Intra), Cytometric bead array, Indirect ELISA

Species Specificity:
human, rat

Product Information

84669-2-PBS targets KAT2A/GCN5 as part of a matched antibody pair:

MP01463-1: 84669-2-PBS capture and 84669-3-PBS detection (validated in Cytometric bead array)

Unconjugated rabbit recombinant monoclonal antibody in PBS only (BSA and azide free) storage buffer at a concentration of 1 mg/mL, ready for conjugation. Created using Proteintech's proprietary in-house recombinant technology. Recombinant production enables unrivalled batch-to-batch consistency, easy scale-up, and future security of supply.

This conjugation ready format makes antibodies ideal for use in many applications including: ELISAs, multiplex assays requiring matched pairs, mass cytometry, and multiplex imaging applications. Antibody use should be optimized by the end user for each application and assay.

Background Information

GCN5, encoded by KAT2A, is a member of nuclear A-type histone acetyltransferase (HAT) which has direct impact on gene transcription. Additionally, GCN5 has roles in cell cycle regulation, DNA replication, and DNA repair, highlighting it as key player in the maintenance of genome stability. GCN5 is a coactivator of c-MYC oncogene protein and has oncogenic roles in various cancers.

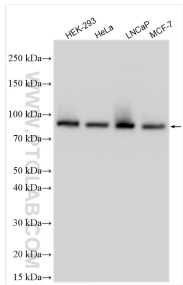
Storage

Storage:
Store at -80°C.
Storage Buffer:
PBS Only

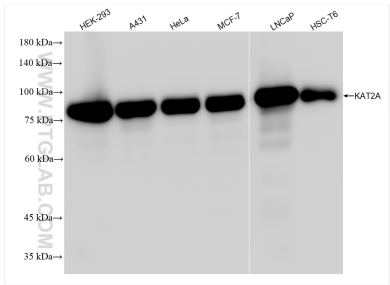
For technical support and original validation data for this product please contact:
T: 1 (888) 4PTGLAB (1-888-478-4522) (toll free in USA), or 1(312) 455-8498 (outside USA)
E: proteintech@ptglab.com
W: ptglab.com

This product is exclusively available under Proteintech Group brand and is not available to purchase from any other manufacturer.

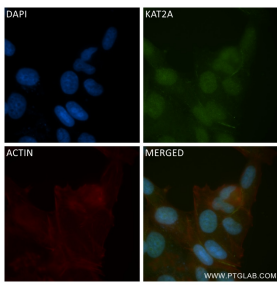
Selected Validation Data



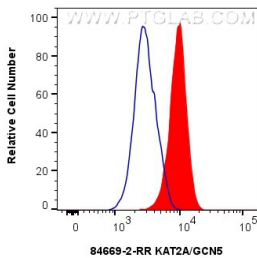
Various lysates were subjected to SDS PAGE followed by western blot with 84669-2-RR (KAT2A/GCN5 antibody) at dilution of 1:1500 incubated at room temperature for 1.5 hours. This data was developed using the same antibody clone with 84669-2-PBS in a different storage buffer formulation.



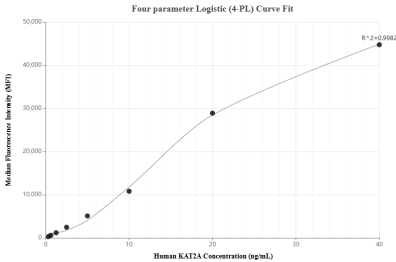
Various lysates were subjected to SDS PAGE followed by western blot with 84669-2-RR (KAT2A/GCN5 antibody) at dilution of 1:5000 incubated at room temperature for 1.5 hours. This data was developed using the same antibody clone with 84669-2-PBS in a different storage buffer formulation.



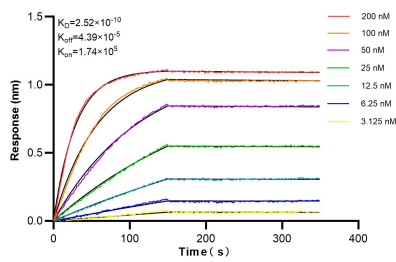
Immunofluorescent analysis of (4% PFA) fixed MCF-7 cells using KAT2A/GCN5 antibody (84669-2-RR, Clone: 242113C7) at dilution of 1:400 and CoraLite®488-Conjugated Goat Anti-Rabbit IgG(H+L) (SA00013-2), CL594-Phalloidin (red). This data was developed using the same antibody clone with 84669-2-PBS in a different storage buffer formulation.



1x10⁶ HEK-293 cells were intracellularly stained with 0.25 ug KAT2A/GCN5 Recombinant antibody (84669-2-RR, Clone:242113C7) and CoraLite®488-Conjugated Goat Anti-Rabbit IgG(H+L) (SA00013-2)(red), or 0.25 ug Rabbit IgG Isotype Control RecAb (98136-1-RR, Clone: 240953C9) (blue). Cells were fixed and permeabilized with Transcription Factor Staining Buffer Kit (PF00011). This data was developed using the same antibody clone



Cytometric bead array standard curve of MP01463-1, KAT2A Recombinant Matched Antibody Pair, PBS Only. Capture antibody: 84669-2-PBS. Detection antibody: 84669-3-PBS. Standard:Ag29005. Range: 0.313-40 ng/mL.



Bilayer interferometry (BLI) kinetic assays of 84669-2-RR against Human KAT2A/GCN5 were performed. The affinity constant is 0.252 nM.