

For Research Use Only

KAT2A/GCN5 Recombinant antibody

Catalog Number: 84669-2-RR



Basic Information

Catalog Number: 84669-2-RR	GenBank Accession Number: BC032743	Purification Method: Protein A purification
Size: 100ul , Concentration: 1000 ug/ml by Nanodrop;	GeneID (NCBI): 2648	CloneNo.: 242113C7
Source: Rabbit	UNIPROT ID: Q92830	Recommended Dilutions: WB 1:500-1:3000 IF/ICC 1:200-1:800
Isotype: IgG	Full Name: K(lysine) acetyltransferase 2A	
Immunogen Catalog Number: AG29005	Calculated MW: 94 kDa	
	Observed MW: 94 kDa	

Applications

Tested Applications: WB, IF/ICC, FC (Intra), ELISA	Positive Controls:
Species Specificity: human, rat	WB : HEK-293 cells, A431 cells, HeLa cells, MCF-7 cells, LNCaP cells, HSC-T6 cells
	IF/ICC : MCF-7 cells,

Background Information

GCN5, encoded by KAT2A, is a member of nuclear A-type histone acetyltransferase (HAT) which has direct impact on gene transcription. Additionally, GCN5 has roles in cell cycle regulation, DNA replication, and DNA repair, highlighting it as key player in the maintenance of genome stability. GCN5 is a coactivator of c-MYC oncogene protein and has oncogenic roles in various cancers.

Storage

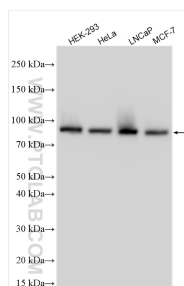
Storage:
Store at -20°C. Stable for one year after shipment.
Storage Buffer:
PBS with 0.02% sodium azide and 50% glycerol pH 7.3.
Aliquoting is unnecessary for -20°C storage

*** 20ul sizes contain 0.1% BSA

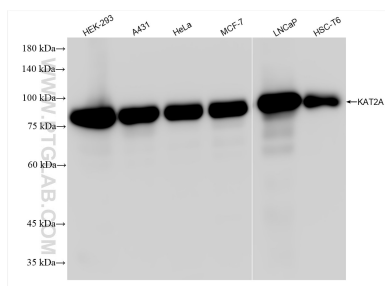
For technical support and original validation data for this product please contact:
T: 1 (888) 4PTGLAB (1-888-478-4522) (toll free in USA), or 1(312) 455-8498 (outside USA)
E: proteintech@ptglab.com
W: ptglab.com

This product is exclusively available under Proteintech Group brand and is not available to purchase from any other manufacturer.

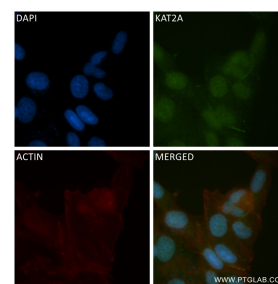
Selected Validation Data



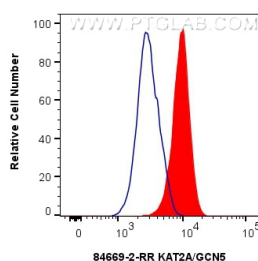
Various lysates were subjected to SDS PAGE followed by western blot with 84669-2-RR (KAT2A/GCN5 antibody) at dilution of 1:1500 incubated at room temperature for 1.5 hours.



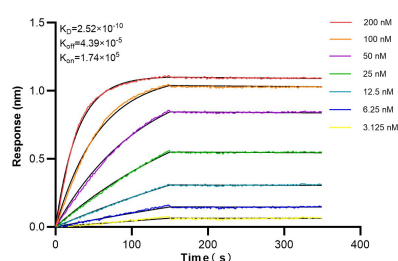
Various lysates were subjected to SDS PAGE followed by western blot with 84669-2-RR (KAT2A/GCN5 antibody) at dilution of 1:5000 incubated at room temperature for 1.5 hours.



Immunofluorescent analysis of (4% PFA) fixed MCF-7 cells using KAT2A/GCN5 antibody (84669-2-RR, Clone: 242113C7) at dilution of 1:400 and CoraLite®488-Conjugated Goat Anti-Rabbit IgG(H+L) (SA00013-2), CL594-Phalloidin (red).



1×10^6 HEK-293 cells were intracellularly stained with 0.25 μ g KAT2A/GCN5 Recombinant antibody (84669-2-RR, Clone:242113C7) and CoraLite®488-Conjugated Goat Anti-Rabbit IgG(H+L) (SA00013-2) (red), or 0.25 μ g Rabbit IgG Isotype Control RecAb (98136-1-RR, Clone: 240953C9) (blue). Cells were fixed and permeabilized with Transcription Factor Staining Buffer Kit (PF00011).



Biolayer interferometry (BLI) kinetic assays of 84669-2-RR against Human KAT2A/GCN5 were performed. The affinity constant is 0.252 nM.