

For Research Use Only

RPL11 Recombinant antibody, PBS Only

Catalog Number: 84670-3-PBS



Basic Information

Catalog Number:

84670-3-PBS

Size:

100ug , Concentration: 1 mg/ml by Nanodrop;

Source:

Rabbit

Isotype:

IgG

Immunogen Catalog Number:

AG9356

GenBank Accession Number:

BC018970

GeneID (NCBI):

6135

UNIPROT ID:

P62913

Full Name:

ribosomal protein L11

Calculated MW:

177 aa, 20 kDa

Observed MW:

20 kDa

Purification Method:

Protein A purification

CloneNo.:

242147D7

Applications

Tested Applications:

WB, Indirect ELISA

Species Specificity:

human, mouse, rat

Background Information

Ribosomal protein L11 is one of 80 mammalian ribosome proteins. It can bind to 5S ribosomal RNA, for it's required for rRNA maturation and formation of the 60S ribosomal subunit. It can inhibit 40S or 60S ribosome biogenesis via mediated p53 induction. Once retained by PICT1 in the nucleolus, RPL11 involve in regulation of the MDM2-P53 pathway and promotion of tumor progression.

Storage

Storage:

Store at -80°C.

Storage Buffer:

PBS Only

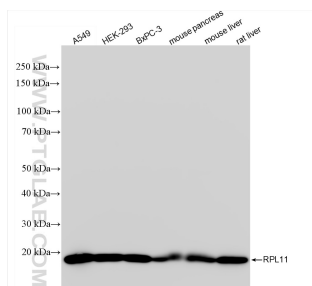
For technical support and original validation data for this product please contact:

T: 1 (888) 4PTGLAB (1-888-478-4522) (toll free in USA), or 1(312) 455-8498 (outside USA)

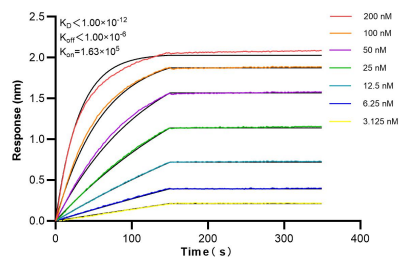
E: proteintech@ptglab.com
W: ptglab.com

This product is exclusively available under Proteintech Group brand and is not available to purchase from any other manufacturer.

Selected Validation Data



Various lysates were subjected to SDS PAGE followed by western blot with 84670-3-RR (RPL11 antibody) at dilution of 1:5000 incubated at room temperature for 1.5 hours. This data was developed using the same antibody clone with 84670-3-PBS in a different storage buffer formulation.



Biolayer interferometry (BLI) kinetic assays of 84670-3-RR against Human RPL11 were performed. The affinity constant is below 1 pM.