

For Research Use Only

RPL11 Recombinant antibody

Catalog Number: 84670-3-RR



Basic Information

Catalog Number:

84670-3-RR

Size:

100ul , Concentration: 1000 µg/ml by Nanodrop;

Source:

Rabbit

Isotype:

IgG

Immunogen Catalog Number:

AG9356

GenBank Accession Number:

BC018970

GeneID (NCBI):

6135

UNIPROT ID:

P62913

Full Name:

ribosomal protein L11

Calculated MW:

177 aa, 20 kDa

Observed MW:

20 kDa

Purification Method:

Protein A purification

CloneNo.:

242147D7

Recommended Dilutions:

WB 1:2000-1:10000

Applications

Tested Applications:

WB, ELISA

Species Specificity:

human, mouse, rat

Positive Controls:

WB : A549 cells, HEK-293 cells, BxPC-3 cells, mouse pancreas tissue, mouse liver tissue, rat liver tissue

Background Information

Ribosomal protein L11 is one of 80 mammalian ribosome proteins. It can bind to 5S ribosomal RNA, for it's required for rRNA maturation and formation of the 60S ribosomal subunit. It can inhibit 40S or 60S ribosome biogenesis via mediated p53 induction. Once retained by PICT1 in the nucleolus, RPL11 involve in regulation of the MDM2-P53 pathway and promotion of tumor progression.

Storage

Storage:

Store at -20°C. Stable for one year after shipment.

Storage Buffer:

PBS with 0.02% sodium azide and 50% glycerol pH 7.3.

Aliquoting is unnecessary for -20°C storage

*** 20ul sizes contain 0.1% BSA

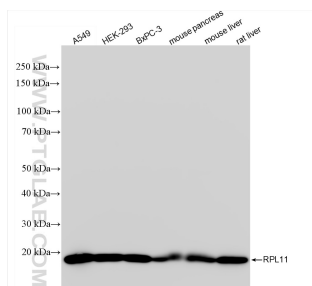
For technical support and original validation data for this product please contact:

T: 1 (888) 4PTGLAB (1-888-478-4522) (toll free in USA), or 1(312) 455-8498 (outside USA)

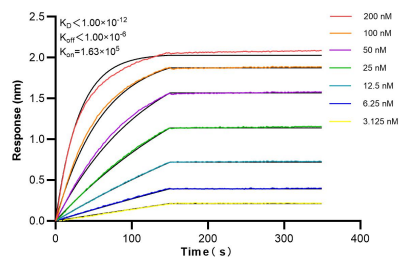
E: proteintech@ptglab.com
W: ptglab.com

This product is exclusively available under Proteintech Group brand and is not available to purchase from any other manufacturer.

Selected Validation Data



Various lysates were subjected to SDS PAGE followed by western blot with 84670-3-RR (RPL11 antibody) at dilution of 1:5000 incubated at room temperature for 1.5 hours.



Biolayer interferometry (BLI) kinetic assays of 84670-3-RR against Human RPL11 were performed. The affinity constant is below 1 pM.