

For Research Use Only

# DIAPH2 Recombinant antibody, PBS Only

Catalog Number: 84671-4-PBS



## Basic Information

**Catalog Number:**

84671-4-PBS

**Size:**

100ug, Concentration: 1 mg/ml by Nanodrop;

**Source:**

Rabbit

**Isotype:**

IgG

**Immunogen Catalog Number:**

AG35280

**GenBank Accession Number:**

NM\_006729.4

**GeneID (NCBI):**

1730

**UNIPROT ID:**

O60879

**Full Name:**

diaphanous homolog 2 (Drosophila)

**Calculated MW:**

126kDa

**Observed MW:**

126-130 kDa

**Purification Method:**

Protein A purification

**CloneNo.:**

242176A11

## Applications

**Tested Applications:**

WB, Indirect ELISA

**Species Specificity:**

human

## Background Information

In vertebrates, three DRF genes (DIAPH1, DIAPH2 and DIAPH3) are the orthologs of the Drosophila melanogaster diaphanous (dia) gene, which has important roles in fertility and hearing in the fly. DIAPH1 and DIAPH3 have been associated with different types of hearing loss (HL). DIAPH2, located on chromosome Xq21.33, until now it has only been linked to premature ovarian failure 2 (POF2A). (PMID: 36689403)

## Storage

**Storage:**

Store at -80°C.

**Storage Buffer:**

PBS only, pH7.3

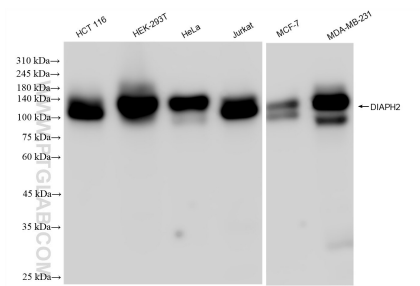
For technical support and original validation data for this product please contact:

T: 1 (888) 4PTGLAB (1-888-478-4522) (toll free in USA), or 1(312) 455-8498 (outside USA)

E: [proteintech@ptglab.com](mailto:proteintech@ptglab.com)  
W: [ptglab.com](http://ptglab.com)

This product is exclusively available under Proteintech Group brand and is not available to purchase from any other manufacturer.

## Selected Validation Data



Various lysates were subjected to SDS PAGE followed by western blot with 84671-4-RR (DIAPH2 antibody) at dilution of 1:10000 incubated at room temperature for 1.5 hours. This data was developed using the same antibody clone with 84671-4-PBS in a different storage buffer formulation.