

For Research Use Only

FSTL1 Recombinant antibody, PBS Only (Detector)

Catalog Number: 84672-2-PBS



Basic Information

Catalog Number: 84672-2-PBS	GenBank Accession Number: BC000055	Purification Method: Protein A purification
Size: 100ug , Concentration: 1 mg/ml by Nanodrop;	GeneID (NCBI): 11167	CloneNo.: 241900D8
Source: Rabbit	UNIPROT ID: Q12841	
Isotype: IgG	Full Name: follistatin-like 1	
Immunogen Catalog Number: AG33795	Calculated MW: 308 aa, 35 kDa	

Applications

Tested Applications:
IF/ICC, Cytometric bead array, Indirect ELISA

Species Specificity:
human

Product Information

84672-2-PBS targets FSTL1 as part of a matched antibody pair:

MP01494-1: 84672-3-PBS capture and 84672-2-PBS detection (validated in Cytometric bead array)

Unconjugated rabbit recombinant monoclonal antibody in PBS only (BSA and azide free) storage buffer at a concentration of 1 mg/mL, ready for conjugation. Created using Proteintech's proprietary in-house recombinant technology. Recombinant production enables unrivalled batch-to-batch consistency, easy scale-up, and future security of supply.

This conjugation ready format makes antibodies ideal for use in many applications including: ELISAs, multiplex assays requiring matched pairs, mass cytometry, and multiplex imaging applications. Antibody use should be optimized by the end user for each application and assay.

Background Information

Follistatin-like protein 1 (FSTL1) is a secreted glycoprotein predominantly produced by mesenchymal cells. It is highly expressed during tissue fibrosis and plays a significant role in various pathological conditions, including inflammation, fibrosis, and immune regulation. It functions as a matricellular protein, interacting with extracellular matrix components and modulating cell-matrix interactions. FSTL1 is involved in multiple biological processes, such as cell proliferation, apoptosis, metabolism, differentiation, and immune response.

Storage

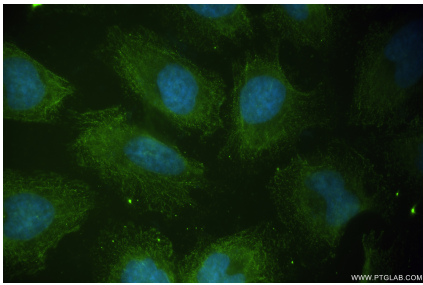
Storage:
Store at -80°C.

Storage Buffer:
PBS Only

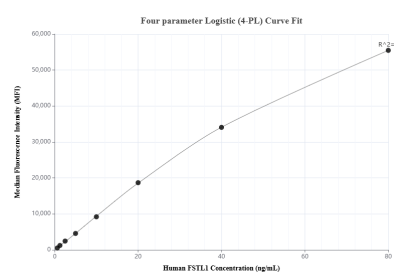
For technical support and original validation data for this product please contact:
T: 1 (888) 4PTGLAB (1-888-478-4522) (toll free in USA), or 1(312) 455-8498 (outside USA)
E: proteintech@ptglab.com
W: ptglab.com

This product is exclusively available under Proteintech Group brand and is not available to purchase from any other manufacturer.

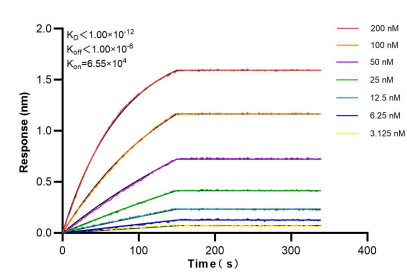
Selected Validation Data



Immunofluorescent analysis of (-20°C Ethanol) fixed HeLa cells using FSTL1 antibody (84672-2-RR, Clone: 241900D8) at dilution of 1:200 and CoraLite®488-Conjugated Goat Anti-Rabbit IgG(H+L) (SA00013-2). This data was developed using the same antibody clone with 84672-2-PBS in a different storage buffer formulation.



Cytometric bead array standard curve of MP01494-1, FSTL1 Recombinant Matched Antibody Pair, PBS Only. Capture antibody: 84672-3-PBS. Detection antibody: 84672-2-PBS. Standard: Ag33795. Range: 0.625-80 ng/mL.



Biolayer interferometry (BLI) kinetic assays of 84672-2-RR against Human FSTL1 were performed. The affinity constant is below 1 pM.