

For Research Use Only

FSTL1 Recombinant antibody

Catalog Number: 84672-2-RR



Basic Information

Catalog Number:

84672-2-RR

GenBank Accession Number:

BC000055

Purification Method:

Protein A purification

Size:

100ul, Concentration: 1000 µg/ml by

GeneID (NCBI):

11167

Nanodrop;

UNIPROT ID:

Q12841

Source:

Rabbit

Full Name:

folliculin-like 1

Isotype:

IgG

Calculated MW:

308 aa, 35 kDa

Immunogen Catalog Number:

AG33795

CloneNo.:

241900D8

Recommended Dilutions:

IF/ICC 1:50-1:500

Applications

Tested Applications:

IF/ICC, ELISA

Positive Controls:

IF/ICC : HeLa cells,

Species Specificity:

human

Background Information

Follistatin-like protein 1 (FSTL1) is a secreted glycoprotein predominantly produced by mesenchymal cells. It is highly expressed during tissue fibrosis and plays a significant role in various pathological conditions, including inflammation, fibrosis, and immune regulation. It functions as a matricellular protein, interacting with extracellular matrix components and modulating cell-matrix interactions. FSTL1 is involved in multiple biological processes, such as cell proliferation, apoptosis, metabolism, differentiation, and immune response.

Storage

Storage:

Store at -20°C. Stable for one year after shipment.

Storage Buffer:

PBS with 0.02% sodium azide and 50% glycerol pH 7.3.

Aliquoting is unnecessary for -20°C storage

*** 20ul sizes contain 0.1% BSA

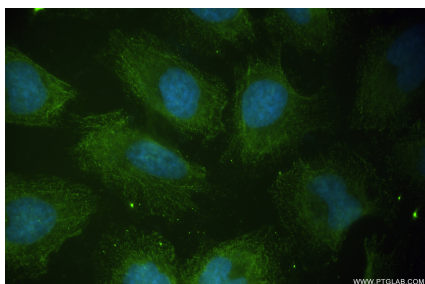
For technical support and original validation data for this product please contact:

T: 1 (888) 4PTGLAB (1-888-478-4522) (toll free
in USA), or 1(312) 455-8498 (outside USA)

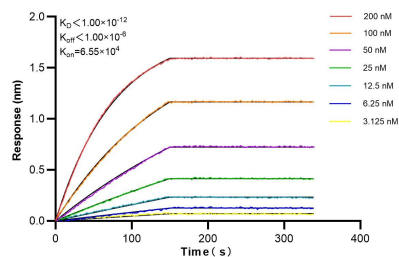
E: proteintech@ptglab.com
W: ptglab.com

This product is exclusively available under Proteintech Group brand and is not available to purchase from any other manufacturer.

Selected Validation Data



Immunofluorescent analysis of (-20°C Ethanol) fixed HeLa cells using FSTL1 antibody (84672-2-RR, Clone: 241900D8) at dilution of 1:200 and CoraLite®488-Conjugated Goat Anti-Rabbit IgG(H+L) (SA00013-2).



Biolayer interferometry (BLI) kinetic assays of 84672-2-RR against Human FSTL1 were performed. The affinity constant is below 1 pM.