

For Research Use Only

CD300a Recombinant antibody, PBS Only (Capture/Detector)

Catalog Number: 84674-1-PBS



Basic Information

Catalog Number: 84674-1-PBS	GenBank Accession Number: NM_007261.4	Purification Method: Protein A purification
Size: 100ug , Concentration: 1 mg/ml by Nanodrop;	GeneID (NCBI): 11314	CloneNo.: 242131F4
Source: Rabbit	UNIPROT ID: Q9UGN4-1	
Isotype: IgG	Full Name: CD300a molecule	
	Calculated MW: 33 kDa	

Applications

Tested Applications:
Cytometric bead array, Sandwich ELISA, Indirect ELISA, Sample test

Species Specificity:
human

Product Information

84674-1-PBS targets CD300a as part of a matched antibody pair:

MP01465-1: 84674-2-PBS capture and 84674-1-PBS detection (validated in Cytometric bead array)

MP01465-2: 84674-1-PBS capture and 84674-3-PBS detection (validated in Sandwich ELISA)

Unconjugated rabbit recombinant monoclonal antibody in PBS only (BSA and azide free) storage buffer at a concentration of 1 mg/mL, ready for conjugation. Created using Proteintech's proprietary in-house recombinant technology. Recombinant production enables unrivalled batch-to-batch consistency, easy scale-up, and future security of supply.

This conjugation ready format makes antibodies ideal for use in many applications including: ELISAs, multiplex assays requiring matched pairs, mass cytometry, and multiplex imaging applications. Antibody use should be optimized by the end user for each application and assay.

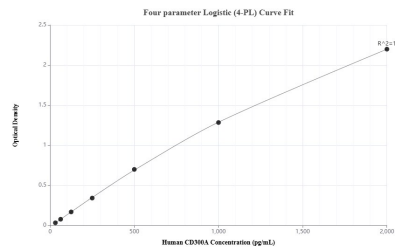
Storage

Storage:
Store at -80°C.
Storage Buffer:
PBS Only

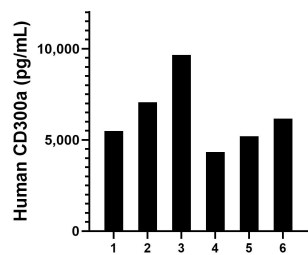
For technical support and original validation data for this product please contact:
T: 1 (888) 4PTGLAB (1-888-478-4522) (toll free in USA), or 1(312) 455-8498 (outside USA)
E: proteintech@ptglab.com
W: ptglab.com

This product is exclusively available under Proteintech Group brand and is not available to purchase from any other manufacturer.

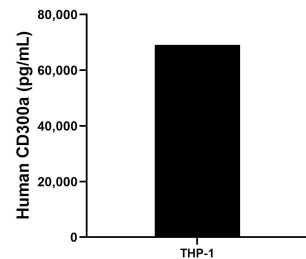
Selected Validation Data



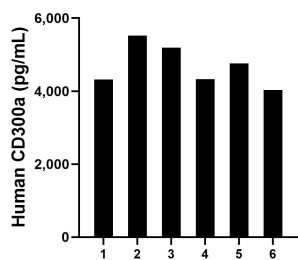
Sandwich ELISA standard curve of MP01465-2, Human CD300a Recombinant Matched Antibody Pair - PBS only. 84674-1-PBS was coated to a plate as the capture antibody and incubated with serial dilutions of standard Eg2652. 84674-3-PBS was HRP conjugated as the detection antibody. Range: 31.25-2000 pg/mL



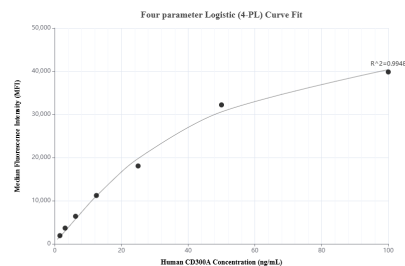
Plasma of six individual healthy human donors was measured. The human CD300a concentration of detected samples was determined to be 6,315.1 pg/mL with a range of 4,330.2 - 9,560.6 pg/mL



The mean CD300a concentration was determined to be 69,064.8 pg/mL in THP-1 cell extract based on a 4.4 mg/mL extract load.



Serum of six individual healthy human donors was measured. The human CD300a concentration of detected samples was determined to be 4,632.3 pg/mL with a range of 4,032.2 - 5,523.5 pg/mL



Cytometric bead array standard curve of MP01465-1, CD300A Recombinant Matched Antibody Pair, PBS Only. Capture antibody: 84674-2-PBS. Detection antibody: 84674-1-PBS. Standard: Eg2652. Range: 0.781-100 ng/mL