

For Research Use Only

CD300a Recombinant antibody

Catalog Number: 84674-4-RR



Basic Information

Catalog Number:

84674-4-RR

Size:

100ul , Concentration: 1000 ug/ml by Nanodrop;

Source:

Rabbit

Isotype:

IgG

GenBank Accession Number:

NM_007261.4

GeneID (NCBI):

11314

UNIPROT ID:

Q9UGN4-1

Full Name:

CD300a molecule

Calculated MW:

33 kDa

Observed MW:

40-70 kDa

Purification Method:

Protein A purification

CloneNo.:

242131H5

Recommended Dilutions:

WB 1:2000-1:10000

IF/ICC 1:125-1:500

Applications

Tested Applications:

WB, IF/ICC, ELISA

Species Specificity:

human

Positive Controls:

WB : THP-1 cells, HL-60 cells

IF/ICC : THP-1 cells,

Background Information

Human CD300a is a transmembrane protein, with an immunoglobulin (Ig)V-like extracellular domain and a cytoplasmic tail containing immunoreceptor tyrosine-based inhibitory motifs (ITIMs), providing the receptor with an inhibitory capacity. The relevance of the CD300a molecule in several pathological conditions has been highlighted by multiple studies. (PMID: 37762055)

Storage

Storage:

Store at -20°C. Stable for one year after shipment.

Storage Buffer:

PBS with 0.02% sodium azide and 50% glycerol pH 7.3.

Aliquoting is unnecessary for -20°C storage

*** 20ul sizes contain 0.1% BSA

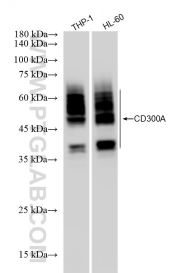
For technical support and original validation data for this product please contact:

T: 1 (888) 4PTGLAB (1-888-478-4522) (toll free in USA), or 1(312) 455-8498 (outside USA)

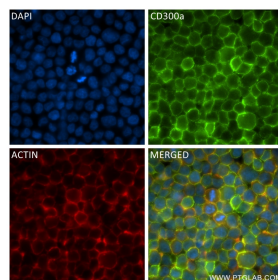
E: proteintech@ptglab.com
W: ptglab.com

This product is exclusively available under Proteintech Group brand and is not available to purchase from any other manufacturer.

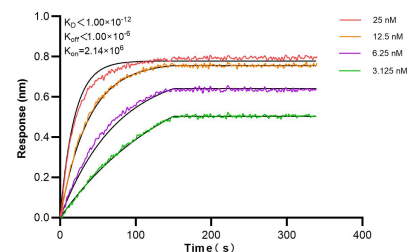
Selected Validation Data



Various lysates were subjected to SDS PAGE followed by western blot with 84674-4-RR (CD300A antibody) at dilution of 1:5000 incubated at room temperature for 1.5 hours.



Immunofluorescent analysis of (4% PFA) fixed THP-1 cells using CD300A antibody (84674-4-RR, Clone: 242131H5) at dilution of 1:250 and CoraLite®488-Conjugated Goat Anti-Rabbit IgG(H+L) (SA00013-2), CL594-Phalloidin (red).



Biolayer interferometry (BLI) kinetic assays of 84674-4-RR against Human CD300A were performed. The affinity constant is below 1 pM.