

For Research Use Only

TFEB Recombinant antibody

Catalog Number: 84675-5-RR



Basic Information

Catalog Number: 84675-5-RR	GenBank Accession Number: BC032448	Purification Method: Protein A purification
Size: 100ul , Concentration: 1000 ug/ml by Nanodrop;	GeneID (NCBI): 7942	CloneNo.: 242093D11
Source: Rabbit	UNIPROT ID: P19484	Recommended Dilutions: WB 1:500-1:2000
Isotype: IgG	Full Name: transcription factor EB	
Immunogen Catalog Number: AG4194	Calculated MW: 476 aa, 53 kDa	
	Observed MW: 65-70 kDa	

Applications

Tested Applications: WB, ELISA	Positive Controls: WB : Raji cells, RAW 264.7 cells
Species Specificity: human, mouse	

Background Information

Transcription factor EB (TFEB) is one of the transcription factors that contain a basic HLH-ZIP domain (for DNA binding) and HLH and ZIP domains (for oligomerization). TFEB specifically recognizes and binds to E-box sequences, which required dimerization with itself or another MiT/TFE family member. It plays a role in T-cell-dependent antibody responses to activated CD4+ T-cells and thymus-dependent humoral immunity once associated with TFE3. It also activates lysosomal gene by binding the CLEAR-box sequence in the regulatory region. It involves in the signal transduction processes required for normal vascularization of the placenta. This is a rabbit polyclonal antibody raised against the full length of human TFEB. The calculated molecular weight of TFEB is 53 kDa, but modified TFEB is about 65-70 kDa (PMID: 12837690). TFEB mainly present in the cytoplasm (PubMed:23434374). Under aberrant lysosomal storage conditions, it translocates from the cytoplasm to the nucleus (PubMed:23434374). Fisetin increases the levels of TFEB localized in nuclei (PMID: 27112200).

Storage

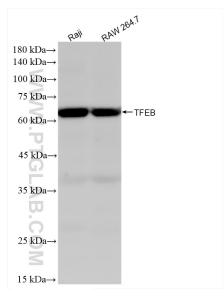
Storage:
Store at -20°C. Stable for one year after shipment.
Storage Buffer:
PBS with 0.02% sodium azide and 50% glycerol pH 7.3.
Aliquoting is unnecessary for -20°C storage

*** 20ul sizes contain 0.1% BSA

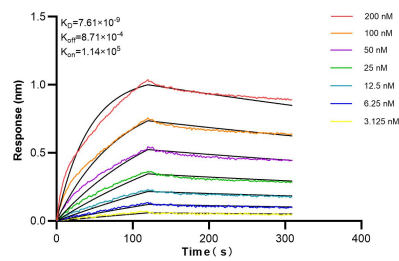
For technical support and original validation data for this product please contact:
T: 1 (888) 4PTGLAB (1-888-478-4522) (toll free in USA), or 1(312) 455-8498 (outside USA)
E: proteintech@ptglab.com
W: ptglab.com

This product is exclusively available under Proteintech Group brand and is not available to purchase from any other manufacturer.

Selected Validation Data



Various lysates were subjected to SDS PAGE followed by western blot with 84675-5-RR (TFEB antibody) at dilution of 1:1000 incubated at room temperature for 1.5 hours.



Biolayer interferometry (BLI) kinetic assays of 84675-5-RR against Human TFEB were performed. The affinity constant is 7.61 nM.