

For Research Use Only

# ERMN Recombinant antibody, PBS Only

Catalog Number: 84680-4-PBS



## Basic Information

<b>Catalog Number:</b> 84680-4-PBS	<b>GenBank Accession Number:</b> BC026345	<b>Purification Method:</b> Protein A purification
<b>Size:</b> 100ug , Concentration: 1 mg/ml by Nanodrop;	<b>GeneID (NCBI):</b> 57471	<b>CloneNo.:</b> 242164C3
<b>Source:</b> Rabbit	<b>UNIPROT ID:</b> Q8TAM6	
<b>Isotype:</b> IgG	<b>Full Name:</b> ermin, ERM-like protein	
<b>Immunogen Catalog Number:</b> AG35648	<b>Observed MW:</b> 50 kDa	

## Applications

**Tested Applications:**  
WB, Indirect ELISA

**Species Specificity:**  
human, rat

## Background Information

ERMN is associated with cytoskeletal rearrangements and the stability of myelin sheath. A study has shown that ERMN is expressed specifically in oligodendrocytes in the central nervous system (CNS), and is involved in the formation of myelin (PMID: 20934411). The predicted MW of ERMN is 33 KDa, while western blot analyses detected a 50 kDa single band protein as a result of phosphorylation modification.

## Storage

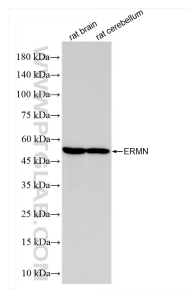
**Storage:**  
Store at -80°C.

**Storage Buffer:**  
PBS Only

For technical support and original validation data for this product please contact:  
T: 1 (888) 4PTGLAB (1-888-478-4522) (toll free in USA), or 1(312) 455-8498 (outside USA)  
E: [proteintech@ptglab.com](mailto:proteintech@ptglab.com)  
W: [ptglab.com](http://ptglab.com)

This product is exclusively available under Proteintech Group brand and is not available to purchase from any other manufacturer.

## Selected Validation Data



Various lysates were subjected to SDS PAGE followed by western blot with 84680-4-RR (ERMN antibody) at dilution of 1:5000 incubated at room temperature for 1.5 hours. This data was developed using the same antibody clone with 84680-4-PBS in a different storage buffer formulation.