

For Research Use Only

# Serpin F1/PEDF Recombinant antibody, PBS Only (Capture)

Catalog Number: 84685-2-PBS



## Basic Information

### Catalog Number:

84685-2-PBS

### Size:

100ug, Concentration: 1 mg/ml by Nanodrop;

### Source:

Rabbit

### Isotype:

IgG

### GenBank Accession Number:

NM\_002615.7

### GeneID (NCBI):

5176

### UNIPROT ID:

P36955

### Full Name:

serpin peptidase inhibitor, clade F (alpha-2 antiplasmin, pigment epithelium derived factor), member 1

### Calculated MW:

46kDa

### Purification Method:

Protein A purification

### CloneNo.:

242127C9

## Applications

### Tested Applications:

Cytometric bead array, Sandwich ELISA, Indirect ELISA, Sample test

### Species Specificity:

human

## Product Information

84685-2-PBS targets Serpin F1/PEDF as part of a matched antibody pair.

MP01496-1: 84685-2-PBS capture and 84685-1-PBS detection (validated in Cytometric bead array, Sandwich ELISA)

Unconjugated rabbit recombinant monoclonal antibody in PBS only (BSA and azide free) storage buffer at a concentration of 1 mg/mL, ready for conjugation. Created using Proteintech's proprietary in-house recombinant technology. Recombinant production enables unrivalled batch-to-batch consistency, easy scale-up, and future security of supply.

This conjugation ready format makes antibodies ideal for use in many applications including: ELISAs, multiplex assays requiring matched pairs, mass cytometry, and multiplex imaging applications. Antibody use should be optimized by the end user for each application and assay.

## Storage

### Storage:

Store at -80°C.

### Storage Buffer:

PBS Only

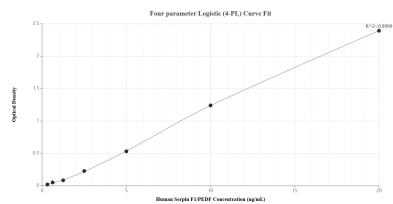
For technical support and original validation data for this product please contact:

T: 1 (888) 4PTGLAB (1-888-478-4522) (toll free in USA), or 1(312) 455-8498 (outside USA)

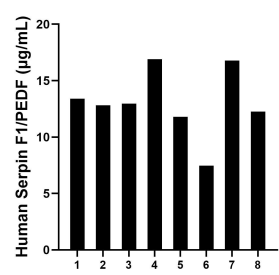
E: [proteintech@ptglab.com](mailto:proteintech@ptglab.com)  
W: [ptglab.com](http://ptglab.com)

This product is exclusively available under Proteintech Group brand and is not available to purchase from any other manufacturer.

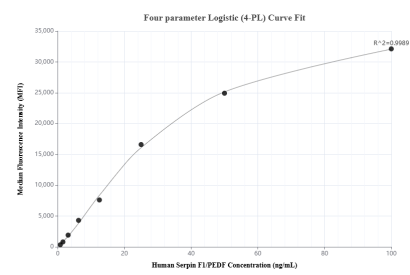
## Selected Validation Data



Sandwich ELISA standard curve of MP01496-1, Human Serpin F1/PEDF Recombinant Matched Antibody Pair - PBS only. 84685-2-PBS was coated to a plate as the capture antibody and incubated with serial dilutions of standard Eg1152. 84685-1-PBS was HRP conjugated as the detection antibody. Range: 0.313-20 ng/mL



Serum of eight individual healthy human donors was measured. The Serpin F1/PEDF concentration of detected samples was determined to be 13.04 µg/mL with a range of 7.46-16.90 µg/mL



Cytometric bead array standard curve of MP01496-1, Serpin F1/PEDF Recombinant Matched Antibody Pair, PBS Only. Capture antibody: 84685-2-PBS. Detection antibody: 84685-1-PBS. Standard: Eg1152. Range: 0.781-100 ng/mL