

For Research Use Only

Serpin F1/PEDF Recombinant antibody

Catalog Number: 84685-3-RR



Basic Information

Catalog Number:

84685-3-RR

Size:

100ul, Concentration: 1000 µg/ml by Nanodrop;

Source:

Rabbit

Isotype:

IgG

GenBank Accession Number:

NM_002615.7

GeneID (NCBI):

5176

UNIPROT ID:

P36955

Full Name:

serpin peptidase inhibitor, clade F (alpha-2 antiplasmin, pigment epithelium derived factor), member 1

Calculated MW:

46kDa

Observed MW:

46 kDa

Purification Method:

Protein A purification

CloneNo.:

242127F9

Recommended Dilutions:

WB 1:5000-1:50000

Applications

Tested Applications:

WB, FC (Intra), ELISA

Species Specificity:

human, mouse

Positive Controls:

WB : HepG2 cells, C2C12 cells

Background Information

PEDF also known as serpin F1 (SERPINF1), is a multifunctional secreted protein that has anti-angiogenic, anti-tumorigenic, and neurotrophic functions. It is an approximately 50-kDa secreted protein that is widely expressed, including by osteoblasts and osteoclasts. PEDF is also one of the most abundant secretory products of adipocytes, and circulating concentrations of PEDF correlate positively with body fat mass and INS resistance. PEDF is a neurotrophic factor involved in neuronal differentiation in retinoblastoma cells. Mutations in this gene were found in individuals with osteogenesis imperfecta, type VI.

Storage

Storage:

Store at -20°C. Stable for one year after shipment.

Storage Buffer:

PBS with 0.02% sodium azide and 50% glycerol

Aliquoting is unnecessary for -20°C storage

*** 20ul sizes contain 0.1% BSA

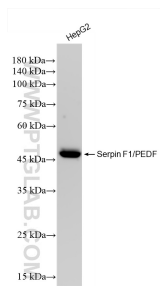
For technical support and original validation data for this product please contact:

T: 1 (888) 4PTGLAB (1-888-478-4522) (toll free in USA), or 1(312) 455-8498 (outside USA)

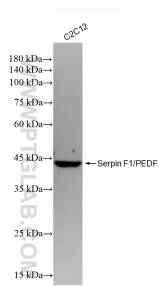
E: proteintech@ptglab.com
W: ptglab.com

This product is exclusively available under Proteintech Group brand and is not available to purchase from any other manufacturer.

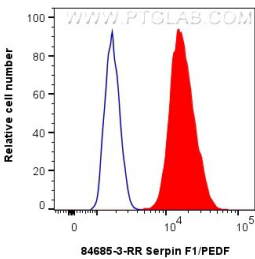
Selected Validation Data



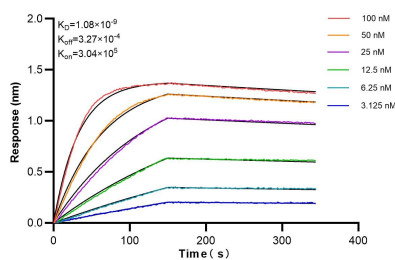
HepG2 cells were subjected to SDS PAGE followed by western blot with 84685-3-RR (Serpin F1/PEDF antibody) at dilution of 1:10000 incubated at room temperature for 1.5 hours.



C2C12 cells were subjected to SDS PAGE followed by western blot with 84685-3-RR (Serpin F1/PEDF antibody) at dilution of 1:10000 incubated at room temperature for 1.5 hours.



1x10⁶ HEK-293 cells were intracellularly stained with 0.25 ug Serpin F1/PEDF Recombinant antibody (84685-3-RR, Clone:242127F9) and CoraLite®488-Conjugated Goat Anti-Rabbit IgG(H+L) (SA00013-2) (red), or 0.25 ug Rabbit IgG Isotype Control RecAb (98136-1-RR, Clone: 240953C9) (blue). Cells were fixed with 4% PFA and permeabilized with Flow Cytometry Perm Buffer (PF00011-C).



Biolayer interferometry (BLI) kinetic assays of 84685-3-RR against Human Serpin F1/PEDF were performed. The affinity constant is 1.08 nM.