

For Research Use Only

AEG-1 Recombinant antibody, PBS Only (Detector)

Catalog Number: 84686-2-PBS



Basic Information

Catalog Number: 84686-2-PBS	GenBank Accession Number: BC045642	Purification Method: Protein A purification
Size: 100ug , Concentration: 1 mg/ml by Nanodrop;	GeneID (NCBI): 92140	CloneNo.: 242110E1
Source: Rabbit	UNIPROT ID: Q86UE4	
Isotype: IgG	Full Name: metadherin	
Immunogen Catalog Number: AG4840	Calculated MW: 582 aa, 64 kDa	

Applications

Tested Applications:
Cytometric bead array, Sandwich ELISA, Indirect ELISA, Sample test

Species Specificity:
human

Product Information

84686-2-PBS targets AEG-1 as part of a matched antibody pair:

MP01497-1: 84686-1-PBS capture and 84686-2-PBS detection (validated in Cytometric bead array, Sandwich ELISA)

MP01497-2: 84686-3-PBS capture and 84686-2-PBS detection (validated in Cytometric bead array)

Unconjugated rabbit recombinant monoclonal antibody in PBS only (BSA and azide free) storage buffer at a concentration of 1 mg/mL, ready for conjugation. Created using Proteintech's proprietary in-house recombinant technology. Recombinant production enables unrivalled batch-to-batch consistency, easy scale-up, and future security of supply.

This conjugation ready format makes antibodies ideal for use in many applications including: ELISAs, multiplex assays requiring matched pairs, mass cytometry, and multiplex imaging applications. Antibody use should be optimized by the end user for each application and assay.

Storage

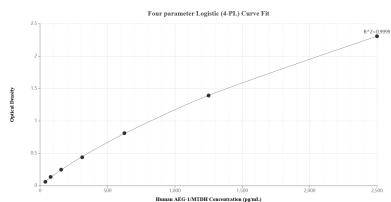
Storage:
Store at -80°C.

Storage Buffer:
PBS only, pH7.3

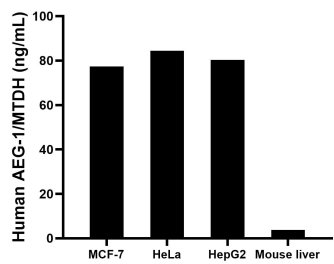
For technical support and original validation data for this product please contact:
T: 1 (888) 4PTGLAB (1-888-478-4522) (toll free in USA), or 1(312) 455-8498 (outside USA)
E: proteintech@ptglab.com
W: ptglab.com

This product is exclusively available under Proteintech Group brand and is not available to purchase from any other manufacturer.

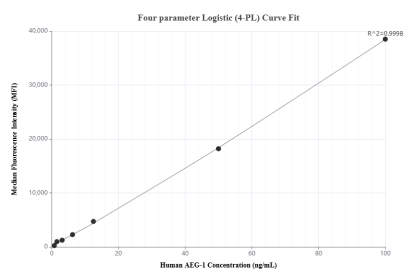
Selected Validation Data



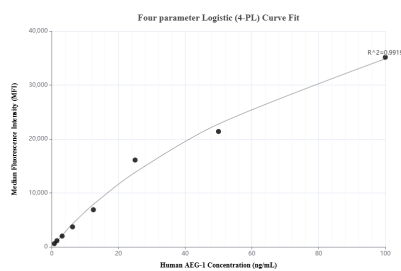
Sandwich ELISA standard curve of MP01497-1, Human AEG-1/MTDH Recombinant Matched Antibody Pair - PBS only. 84686-1-PBS was coated to a plate as the capture antibody and incubated with serial dilutions of standard Ag4840. 84686-2-PBS was HRP conjugated as the detection antibody. Range: 39.1-2500 pg/mL



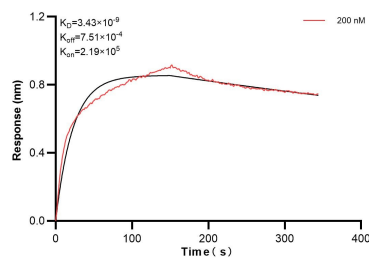
The mean AEG-1/MTDH concentration was determined to be 77.3 ng/mL in MCF-7 cell extract based on a 1.2 mg/mL extract load, 84.5 ng/mL in HeLa cell extract based on a 1.3 mg/mL extract load, 80.3 ng/mL in HepG2 cell extract based on a 3.3 mg/mL extract load and 3.8 ng/mL in mouse liver tissue extract based on a 3.7 mg/mL extract load.



Cytometric bead array standard curve of MP01497-1, AEG-1/MTDH Recombinant Matched Antibody Pair, PBS Only. Capture antibody: 84686-1-PBS. Detection antibody: 84686-2-PBS. Standard: Ag4840. Range: 0.781-100 ng/mL



Cytometric bead array standard curve of MP01497-2, AEG-1/MTDH Recombinant Matched Antibody Pair, PBS Only. Capture antibody: 84686-3-PBS. Detection antibody: 84686-2-PBS. Standard: Ag4840. Range: 0.781-100 ng/mL



Biolayer interferometry (BLI) kinetic assay of 84686-2-PBS against Human AEG-1 was performed. The affinity constant is 3.43 nM.