

For Research Use Only

# AEG-1/MTDH Recombinant antibody

Catalog Number: 84686-4-RR



## Basic Information

<b>Catalog Number:</b> 84686-4-RR	<b>GenBank Accession Number:</b> BC045642	<b>Purification Method:</b> Protein A purification
<b>Size:</b> 100ul , Concentration: 1000 µg/ml by Nanodrop;	<b>GeneID (NCBI):</b> 92140	<b>CloneNo.:</b> 242110B5
<b>Source:</b> Rabbit	<b>UNIPROT ID:</b> Q86UE4	<b>Recommended Dilutions:</b> WB 1:5000-1:50000 IF/ICC 1:200-1:800
<b>Isotype:</b> IgG	<b>Full Name:</b> metadherin	
<b>Immunogen Catalog Number:</b> AG4840	<b>Calculated MW:</b> 582 aa, 64 kDa	
	<b>Observed MW:</b> 75 kDa	

## Applications

<b>Tested Applications:</b> WB, IF/ICC, FC (Intra), ELISA	<b>Positive Controls:</b> WB : A549 cells, HeLa cells, HL-60 cells, MCF-7 cells, HepG2 cells, U-937 cells IF/ICC : MCF-7 cells,
<b>Species Specificity:</b> human	

## Background Information

MTDH, also known as AEG-1, is a single-pass transmembrane protein with its gene located at chromosome 8q22, the abnormalities of which have been identified in several tumor types. MTDH is overexpressed in a number of malignancies, such as breast cancer, malignant glioma, and neuroblastoma, and its overexpression is associated with poor clinical outcome. MTDH plays an important role in the regulation of carcinogenesis and tumor progression.

## Storage

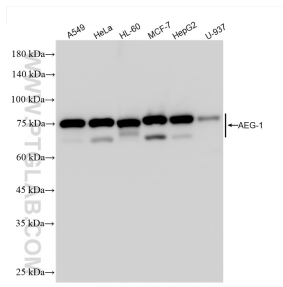
**Storage:**  
Store at -20°C. Stable for one year after shipment.  
**Storage Buffer:**  
PBS with 0.02% sodium azide and 50% glycerol, pH7.3  
Aliquoting is unnecessary for -20°C storage

\*\*\* 20ul sizes contain 0.1% BSA

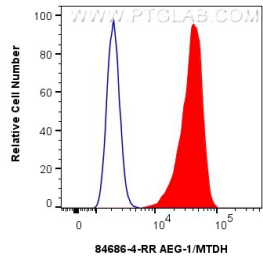
For technical support and original validation data for this product please contact:  
T: 1 (888) 4PTGLAB (1-888-478-4522) (toll free in USA), or 1(312) 455-8498 (outside USA)  
E: [proteintech@ptglab.com](mailto:proteintech@ptglab.com)  
W: [ptglab.com](http://ptglab.com)

This product is exclusively available under Proteintech Group brand and is not available to purchase from any other manufacturer.

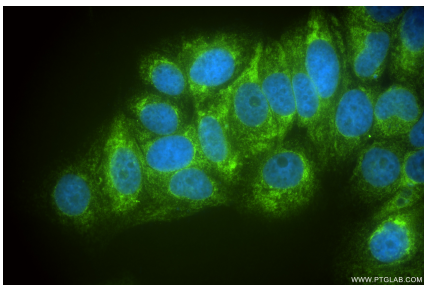
## Selected Validation Data



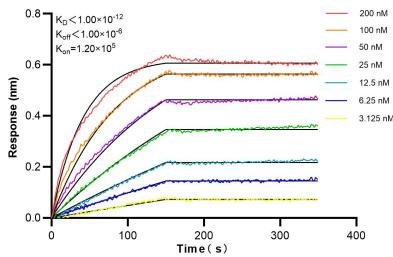
Various lysates were subjected to SDS PAGE followed by western blot with 84686-4-RR (AEG-1 antibody) at dilution of 1:10000 incubated at room temperature for 1.5 hours.



1x10<sup>6</sup> A549 cells were intracellularly stained with 0.25 ug AEG-1/MTDH Recombinant antibody (84686-4-RR, Clone:242110B5) and CoraLite®488-Conjugated Goat Anti-Rabbit IgG(H+L) (SA00013-2) (red), or 0.25 ug Rabbit IgG Isotype Control RecAb (98136-1-RR, Clone: 240953C9) (blue). Cells were fixed with 4% PFA and permeabilized with Flow Cytometry Perm Buffer (PF00011-C).



Immunofluorescent analysis of (4% PFA) fixed MCF-7 cells using AEG-1 antibody (84686-4-RR, Clone: 242110B5) at dilution of 1:400 and CoraLite®488-Conjugated Goat Anti-Rabbit IgG(H+L) (SA00013-2).



Biolayer interferometry (BLI) kinetic assays of 84686-4-RR against Human AEG-1/MTDH were performed. The affinity constant is below 1 pM.