

For Research Use Only

# Jagged1 Recombinant antibody, PBS Only

Catalog Number: 84694-1-PBS



## Basic Information

**Catalog Number:**

84694-1-PBS

**Size:**

100ug , Concentration: 1 mg/ml by Nanodrop;

**Source:**

Rabbit

**Isotype:**

IgG

**GenBank Accession Number:**

BC098393

**GeneID (NCBI):**

182

**UNIPROT ID:**

P78504

**Full Name:**

jagged 1 (Alagille syndrome)

**Calculated MW:**

1218 aa, 134 kDa

**Observed MW:**

150 kDa

**Purification Method:**

Protein A purification

**CloneNo.:**

241412F1

## Applications

**Tested Applications:**

WB, Indirect ELISA

**Species Specificity:**

human

## Background Information

Jagged1 is a type I, membrane- anchored, multidomain protein and a ligand of the Notch receptor. The receptor-ligand interaction can trigger the Notch signaling and activate transcription factors that play key roles in cell differentiation and morphogenesis. The predicted MW of Jagged1 is 134 kDa, while higher MW around 150-180 kDa had been observed in literatures (PMID: 9716576, 9596653).

## Storage

**Storage:**

Store at -80°C.

**Storage Buffer:**

PBS Only

For technical support and original validation data for this product please contact:

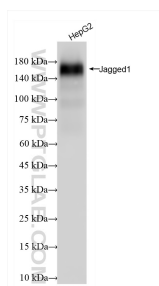
T: 1 (888) 4PTGLAB (1-888-478-4522) (toll free in USA), or 1(312) 455-8498 (outside USA)

E: [proteintech@ptglab.com](mailto:proteintech@ptglab.com)

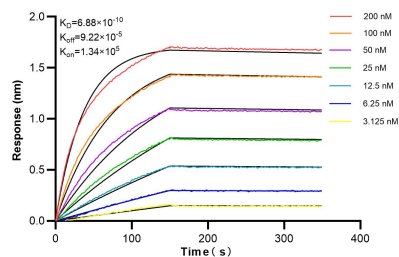
W: [ptglab.com](http://ptglab.com)

This product is exclusively available under Proteintech Group brand and is not available to purchase from any other manufacturer.

## Selected Validation Data



HepG2 cells were subjected to SDS PAGE followed by western blot with 84694-1-RR (Jagged1 antibody) at dilution of 1:1000 incubated at room temperature for 1.5 hours. This data was developed using the same antibody clone with 84694-1-PBS in a different storage buffer formulation.



Biolayer interferometry (BLI) kinetic assays of 84694-1-RR against Human Jagged1 were performed. The affinity constant is 0.688 nM.