

For Research Use Only

SLC25A1 Recombinant antibody

Catalog Number: 84696-1-RR

Featured Product



Basic Information

Catalog Number:

84696-1-RR

Size:

100ul , Concentration: 1000 µg/ml by Nanodrop;

Source:

Rabbit

Isotype:

IgG

GenBank Accession Number:

BC004980

GeneID (NCBI):

6576

UNIPROT ID:

P53007

Full Name:

solute carrier family 25 (mitochondrial carrier; citrate transporter), member 1

Calculated MW:

34 kDa

Observed MW:

30 kDa

Purification Method:

Protein A purification

CloneNo.:

241931G11

Recommended Dilutions:

WB 1:2000-1:10000

Applications

Tested Applications:

WB, ELISA

Species Specificity:

human

Positive Controls:

WB : HeLa cells, HepG2 cells, HEK-293 cells, NCI-H1299 cells

Background Information

SLC25A1, also known as CIC or CTP, is a mitochondrial citrate transporter that exports citrate from the mitochondria to the cytosol. SLC25A1 is highly expressed in several tumor types. Recently it has been identified as a novel transcriptional target of mutant p53 and a negative tumor prognostic marker. In addition, defects in SLC25A1 have been found as a cause of combined D-2- and L-2-hydroxyglutaric aciduria. (PMID: 24681808, 23561848)

Storage

Storage:

Store at -20°C. Stable for one year after shipment.

Storage Buffer:

PBS with 0.02% sodium azide and 50% glycerol pH 7.3.

Aliquoting is unnecessary for -20°C storage

*** 20ul sizes contain 0.1% BSA

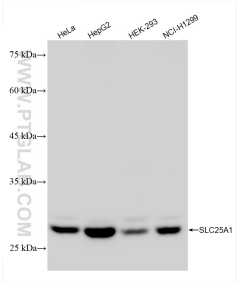
For technical support and original validation data for this product please contact:

T: 1 (888) 4PTGLAB (1-888-478-4522) (toll free in USA), or 1(312) 455-8498 (outside USA)

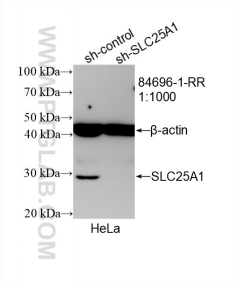
E: proteintech@ptglab.com
W: ptglab.com

This product is exclusively available under Proteintech Group brand and is not available to purchase from any other manufacturer.

Selected Validation Data



Various lysates were subjected to SDS PAGE followed by western blot with 84696-1-RR (SLC25A1 antibody) at dilution of 1:5000 incubated at room temperature for 1.5 hours.



WB result of SLC25A1 antibody (84696-1-RR; 1:1000; incubated at room temperature for 1.5 hours) with sh-Control and sh-SLC25A1 transfected HeLa cells.