

For Research Use Only

# S1PR3 Recombinant antibody

Catalog Number: 84697-1-RR

1 Publications



## Basic Information

### Catalog Number:

84697-1-RR

### Size:

100ul , Concentration: 1000 µg/ml by Nanodrop;

### Source:

Rabbit

### Isotype:

IgG

### GenBank Accession Number:

NM\_005226

### GeneID (NCBI):

1903

### UNIPROT ID:

Q99500

### Full Name:

sphingosine-1-phosphate receptor 3

### Calculated MW:

42 kDa

### Observed MW:

39 kDa

### Purification Method:

Protein A purification

### CloneNo.:

241905C2

### Recommended Dilutions:

WB 1:5000-1:50000

## Applications

### Tested Applications:

WB, ELISA

### Cited Applications:

WB

### Species Specificity:

human

### Cited Species:

mouse

### Positive Controls:

WB : Jurkat cells, HepG2 cells, MCF-7 cells, HEK-293 cells, HeLa cells

## Background Information

S1PR3 (sphingosine-1-phosphate receptor 3), also known as S1P3 or EDG3, is one of five G-protein-coupled receptors for sphingosine-1-phosphate (S1P). S1P1 and its receptors have important regulatory functions in normal physiology and disease processes, particularly involving the immune, central nervous, and cardiovascular systems (PMID: 21339489). S1PR3 has a role in the development of a stable and mature vascular system during embryonic development (PMID: 15138255).

## Notable Publications

Author	Pubmed ID	Journal	Application
Dengpan Song	39581391	Mol Cell Neurosci	WB

## Storage

### Storage:

Store at -20°C. Stable for one year after shipment.

### Storage Buffer:

PBS with 0.02% sodium azide and 50% glycerol pH 7.3.

Aliquoting is unnecessary for -20°C storage

\*\*\* 20ul sizes contain 0.1% BSA

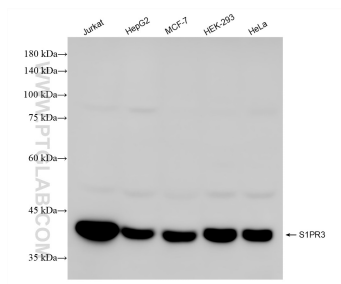
For technical support and original validation data for this product please contact:

T: 1 (888) 4PTGLAB (1-888-478-4522) (toll free in USA), or 1(312) 455-8498 (outside USA)

E: [proteintech@ptglab.com](mailto:proteintech@ptglab.com)  
W: [ptglab.com](http://ptglab.com)

This product is exclusively available under Proteintech Group brand and is not available to purchase from any other manufacturer.

## Selected Validation Data



Various lysates were subjected to SDS PAGE followed by western blot with 84697-1-RR (S1PR3 antibody) at dilution of 1:10000 incubated at room temperature for 1.5 hours.