

For Research Use Only

MAT2A Recombinant antibody, PBS Only

Catalog Number: 84698-1-PBS



Basic Information

Catalog Number: 84698-1-PBS	GenBank Accession Number: NM_005911	Purification Method: Protein A purification
Size: 100ug, Concentration: 1 mg/ml by Nanodrop;	GeneID (NCBI): 4144	CloneNo.: 241930C7
Source: Rabbit	UNIPROT ID: P31153	
Isotype: IgG	Full Name: methionine adenosyltransferase II, alpha	
	Calculated MW: 44 kDa	
	Observed MW: 45-50 kDa	

Applications

Tested Applications:
WB, Indirect ELISA

Species Specificity:
human, mouse

Background Information

MAT2A, also named as AMS2, MATA2 and AdoMet synthase 2, belongs to the AdoMet synthase family. It catalyzes the formation of S-adenosylmethionine from methionine and ATP. This antibody is specific to MATA2.

Storage

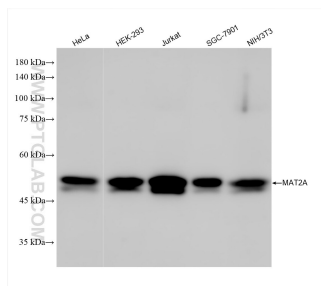
Storage:
Store at -80°C.

Storage Buffer:
PBS Only

For technical support and original validation data for this product please contact:
T: 1 (888) 4PTGLAB (1-888-478-4522) (toll free in USA), or 1(312) 455-8498 (outside USA)
E: proteintech@ptglab.com
W: ptglab.com

This product is exclusively available under Proteintech Group brand and is not available to purchase from any other manufacturer.

Selected Validation Data



Various lysates were subjected to SDS PAGE followed by western blot with 84698-1-RR (MAT2A antibody) at dilution of 1:5000 incubated at room temperature for 1.5 hours. This data was developed using the same antibody clone with 84698-1-PBS in a different storage buffer formulation.