

For Research Use Only

MAT2A Recombinant antibody

Catalog Number: 84698-1-RR



Basic Information

Catalog Number:

84698-1-RR

Size:

100ul , Concentration: 1000 µg/ml by Nanodrop;

Source:

Rabbit

Isotype:

IgG

GenBank Accession Number:

NM_005911

GeneID (NCBI):

4144

UNIPROT ID:

P31153

Full Name:

methionine adenosyltransferase II, alpha

Calculated MW:

44 kDa

Observed MW:

45-50 kDa

Purification Method:

Protein A purification

CloneNo.:

241930C7

Recommended Dilutions:

WB 1:2000-1:10000

Applications

Tested Applications:

WB, ELISA

Species Specificity:

human, mouse

Positive Controls:

WB : HeLa cells, HEK-293 cells, Jurkat cells, SGC-7901 cells, NIH/3T3 cells

Background Information

MAT2A, also named as AMS2, MATA2 and AdoMet synthase 2, belongs to the AdoMet synthase family. It catalyzes the formation of S-adenosylmethionine from methionine and ATP. This antibody is specific to MATA2.

Storage

Storage:

Store at -20°C. Stable for one year after shipment.

Storage Buffer:

PBS with 0.02% sodium azide and 50% glycerol pH 7.3.

Aliquoting is unnecessary for -20°C storage

*** 20ul sizes contain 0.1% BSA

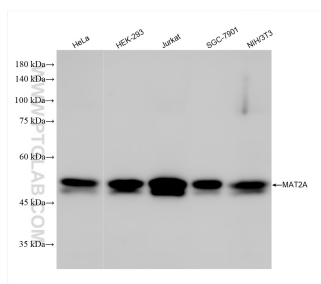
For technical support and original validation data for this product please contact:

T: 1 (888) 4PTGLAB (1-888-478-4522) (toll free in USA), or 1(312) 455-8498 (outside USA)

E: proteintech@ptglab.com
W: ptglab.com

This product is exclusively available under Proteintech Group brand and is not available to purchase from any other manufacturer.

Selected Validation Data



Various lysates were subjected to SDS PAGE followed by western blot with 84698-1-RR (MAT2A antibody) at dilution of 1:5000 incubated at room temperature for 1.5 hours.