

For Research Use Only

CYP26A1 Recombinant antibody

Catalog Number: 84699-1-RR



Basic Information

Catalog Number: 84699-1-RR	GenBank Accession Number: BC157063	Purification Method: Protein A purification
Size: 100ul , Concentration: 1000 µg/ml by Nanodrop;	GeneID (NCBI): 1592	CloneNo.: 241816D11
Source: Rabbit	UNIPROT ID: O43174	Recommended Dilutions: WB 1:5000-1:50000 IHC 1:250-1:1000 IF-P 1:125-1:500
Isotype: IgG	Full Name: cytochrome P450, family 26, subfamily A, polypeptide 1	
Immunogen Catalog Number: AG24898	Calculated MW: 497 aa, 56 kDa	
	Observed MW: 50-56 kDa	

Applications

Tested Applications: WB, IHC, IF-P, FC (Intra), ELISA	Positive Controls:
Species Specificity: human, mouse	WB : human placenta tissue, mouse skeletal muscle tissue
Note-IHC: suggested antigen retrieval with TE buffer pH 9.0; (*) Alternatively, antigen retrieval may be performed with citrate buffer pH 6.0	IHC : mouse skeletal muscle tissue,
	IF-P : human placenta tissue,

Background Information

CYP26A1 (Cytochrome P450 Family 26 Subfamily A Member 1), also known as Cytochrome P450 26A1, CP26, CYP26, P450RA1, and P450RA11, is a member of the cytochrome P450 superfamily of enzymes, involved in retinoic acid (RA) metabolism and synthesis of cholesterol, steroids, and other lipids. CYP26A1 is essential for normal hindbrain patterning, vertebral identity, and development of posterior structures(PMID: 11157778).

Storage

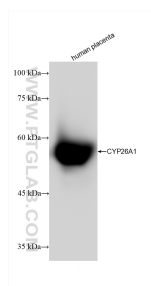
Storage:
Store at -20°C. Stable for one year after shipment.
Storage Buffer:
PBS with 0.02% sodium azide and 50% glycerol pH 7.3.
Aliquoting is unnecessary for -20°C storage

*** 20ul sizes contain 0.1% BSA

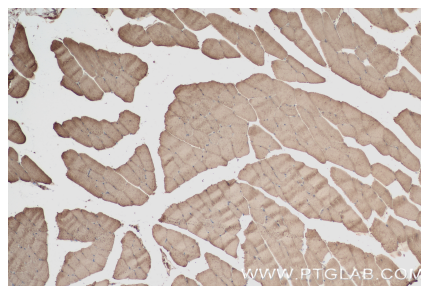
For technical support and original validation data for this product please contact:
T: 1 (888) 4PTGLAB (1-888-478-4522) (toll free in USA), or 1(312) 455-8498 (outside USA)
E: proteintech@ptglab.com
W: ptglab.com

This product is exclusively available under Proteintech Group brand and is not available to purchase from any other manufacturer.

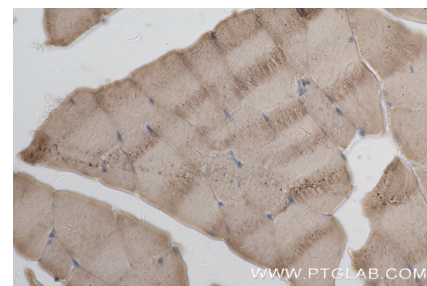
Selected Validation Data



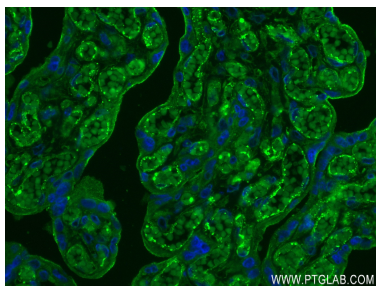
Various lysates were subjected to SDS PAGE followed by western blot with 84699-1-RR (CYP26A1 antibody) at dilution of 1:10000 incubated at room temperature for 1.5 hours.



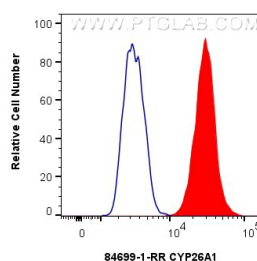
Immunohistochemical analysis of paraffin-embedded mouse skeletal muscle tissue slide using 84699-1-RR (CYP26A1 antibody) at dilution of 1:500 (under 10x lens). Heat mediated antigen retrieval with Tris-EDTA buffer (pH 9.0).



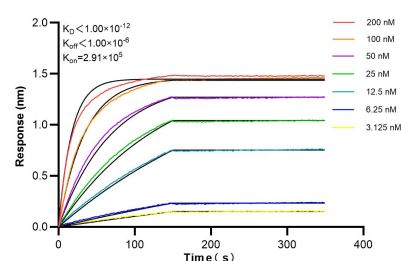
Immunohistochemical analysis of paraffin-embedded mouse skeletal muscle tissue slide using 84699-1-RR (CYP26A1 antibody) at dilution of 1:500 (under 40x lens). Heat mediated antigen retrieval with Tris-EDTA buffer (pH 9.0).



Immunofluorescent analysis of (4% PFA) fixed paraffin-embedded human placenta tissue using CYP26A1 antibody (84699-1-RR, Clone: 241816D11) at dilution of 1:250 and CoraLite®488-Conjugated Goat Anti-Rabbit IgG(H+L) (SA00013-2). Heat mediated antigen retrieval with Tris-EDTA buffer (pH 9.0).



1x10⁶ HepG2 cells were intracellularly stained with 0.25 ug CYP26A1 Recombinant antibody (84699-1-RR, Clone:241816D11) and CoraLite®488-Conjugated Goat Anti-Rabbit IgG(H+L) (SA00013-2) (red), or 0.25 ug Rabbit IgG Isotype Control RecAb (98136-1-RR, Clone: 240953C9) (blue). Cells were fixed with 4% PFA and permeabilized with Flow Cytometry Perm Buffer (PF00011-C).



Bi-layer interferometry (BLI) kinetic assays of 84699-1-RR against Human CYP26A1 were performed. The affinity constant is below 1 pM.