

For Research Use Only

CCL3 Recombinant antibody

Catalog Number: 84701-1-RR



Basic Information

Catalog Number: 84701-1-RR	GenBank Accession Number: NM_011337	Purification Method: Protein A purification
Size: 100ul , Concentration: 1000 µg/ml by Nanodrop;	GeneID (NCBI): 20302	CloneNo.: 241695B10
Source: Rabbit	UNIPROT ID: P10855	Recommended Dilutions: IF/ICC 1:200-1:800
Isotype: IgG	Full Name: chemokine (C-C motif) ligand 3	
	Calculated MW: 10kd	

Applications

Tested Applications: IF/ICC, ELISA	Positive Controls: IF/ICC : RAW 264.7 cells,
Species Specificity: mouse	

Background Information

CCL3, also known as macrophage inflammatory protein-1 alpha (MIP-1α), is a chemokine that plays a significant role in immune responses. It is involved in recruiting immune cells, particularly monocytes and T cells, to sites of inflammation and infection. CCL3 is produced by various cell types, including activated macrophages and lymphocytes, and is crucial for orchestrating the immune response to infections and tissue injury. In summary, CCL3 is a multifunctional chemokine that is essential for immune cell recruitment and plays a role in various diseases, including chronic inflammatory conditions and cancer.

Storage

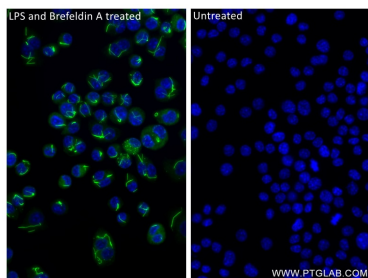
Storage:
Store at -20°C. Stable for one year after shipment.
Storage Buffer:
PBS with 0.02% sodium azide and 50% glycerol pH 7.3.
Aliquoting is unnecessary for -20°C storage

*** 20ul sizes contain 0.1% BSA

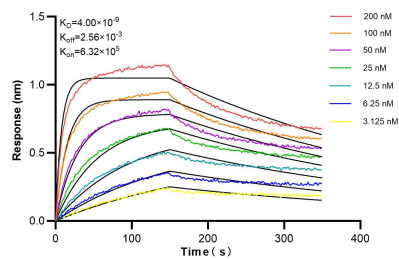
For technical support and original validation data for this product please contact:
T: 1 (888) 4PTGLAB (1-888-478-4522) (toll free in USA), or 1(312) 455-8498 (outside USA)
E: proteintech@ptglab.com
W: ptglab.com

This product is exclusively available under Proteintech Group brand and is not available to purchase from any other manufacturer.

Selected Validation Data



Immunofluorescent analysis of (4% PFA) fixed RAW 264.7 cells using CCL3 antibody (84701-1-RR, Clone: 241695B10) at dilution of 1:400 and CoraLite®488-Conjugated Goat Anti-Rabbit IgG(H+L) (SA00013-2).



Biolayer interferometry (BLI) kinetic assays of 84701-1-RR against Mouse CCL3 were performed. The affinity constant is 4.00 nM.