

For Research Use Only

APLP2 Recombinant antibody

Catalog Number: 84703-3-RR



Basic Information

Catalog Number: 84703-3-RR	GenBank Accession Number: BC000373	Purification Method: Protein A purification
Size: 100ul , Concentration: 1000 µg/ml by Nanodrop;	GeneID (NCBI): 334	CloneNo.: 241655G7
Source: Rabbit	UNIPROT ID: Q06481	Recommended Dilutions: WB 1:500-1:2000
Isotype: IgG	Full Name: amyloid beta (A4) precursor-like protein 2	
Immunogen Catalog Number: AG6842	Calculated MW: 87 kDa	
	Observed MW: 95-120 kDa	

Applications

Tested Applications: WB, ELISA	Positive Controls:
Species Specificity: human, mouse, rat	WB : rat brain tissue, mouse brain tissue, SH-SY5Y cells, HEK-293 cells

Background Information

Amyloid precursor-like protein-2 (APLP2) is a member of the APP (amyloid precursor protein) family including APP, APLP1, and APLP2. APLP2 is ubiquitously expressed. It contains heparin-, copper- and zinc- binding domains at the N-terminus, BPTI/Kunitz inhibitor and E2 domains in the middle region, and transmembrane and intracellular domains at the C-terminus. APLP2 has been shown to regulate multiple cellular functions such as neurite outgrowth, axogenesis, corneal epithelial wound healing, cell adhesion, migration, and mitosis. The synergy of this protein and the APP is required to mediate neuromuscular transmission, spatial learning and synaptic plasticity. APLP2 has been implicated in the pathogenesis of Alzheimer's disease.

Storage

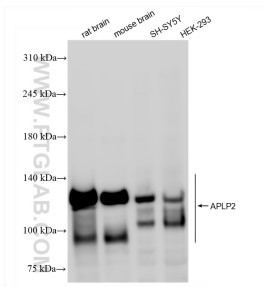
Storage:
Store at -20°C. Stable for one year after shipment.
Storage Buffer:
PBS with 0.02% sodium azide and 50% glycerol pH 7.3.
Aliquoting is unnecessary for -20°C storage

*** 20ul sizes contain 0.1% BSA

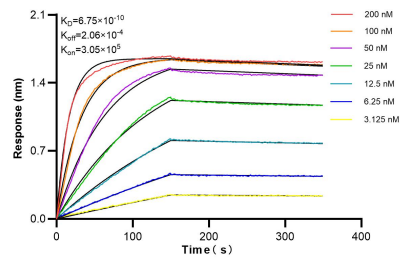
For technical support and original validation data for this product please contact:
T: 1 (888) 4PTGLAB (1-888-478-4522) (toll free in USA), or 1(312) 455-8498 (outside USA)
E: proteintech@ptglab.com
W: ptglab.com

This product is exclusively available under Proteintech Group brand and is not available to purchase from any other manufacturer.

Selected Validation Data



Various lysates were subjected to SDS PAGE followed by western blot with 84703-3-RR (APLP2 antibody) at dilution of 1:1000 incubated at room temperature for 1.5 hours.



Biolayer interferometry (BLI) kinetic assays of 84703-3-RR against Human APLP2 were performed. The affinity constant is 0.675 nM.