

For Research Use Only

C12orf29 Recombinant antibody, PBS Only (Capture)

Catalog Number: 84708-1-PBS



Basic Information

Catalog Number: 84708-1-PBS	GenBank Accession Number: NM_001009894.2	Purification Method: Protein A purification
Size: 100ug , Concentration: 1 mg/ml by Nanodrop;	GeneID (NCBI): 91298	CloneNo.: 242163C3
Source: Rabbit	UNIPROT ID: Q8N999	
Isotype: IgG	Full Name: chromosome 12 open reading frame 29	
Immunogen Catalog Number: AG35681	Calculated MW: 37kDa 325aa	
	Observed MW: 37 kDa	

Applications

Tested Applications:
WB, Cytometric bead array, Indirect ELISA

Species Specificity:
human, rat

Product Information

84708-1-PBS targets C12orf29 as part of a matched antibody pair:

MP01512-1: 84708-1-PBS capture and 84708-2-PBS detection (validated in Cytometric bead array)

Unconjugated rabbit recombinant monoclonal antibody in PBS only (BSA and azide free) storage buffer at a concentration of 1 mg/mL, ready for conjugation. Created using Proteintech's proprietary in-house recombinant technology. Recombinant production enables unrivalled batch-to-batch consistency, easy scale-up, and future security of supply.

This conjugation ready format makes antibodies ideal for use in many applications including: ELISAs, multiplex assays requiring matched pairs, mass cytometry, and multiplex imaging applications. Antibody use should be optimized by the end user for each application and assay.

Background Information

C12orf29, also known as RLIG1, is a 37 kDa human protein consisting of 325 amino acids. It catalyzes ATP-dependent RNA ligation via a three-step mechanism involving tandem auto- and RNA AMPylation (PMID: 36792600).

Storage

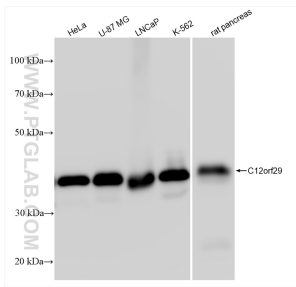
Storage:
Store at -80°C.

Storage Buffer:
PBS Only

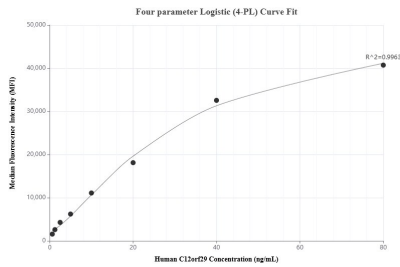
For technical support and original validation data for this product please contact:
T: 1 (888) 4PTGLAB (1-888-478-4522) (toll free in USA), or 1(312) 455-8498 (outside USA)
E: proteintech@ptglab.com
W: ptglab.com

This product is exclusively available under Proteintech Group brand and is not available to purchase from any other manufacturer.

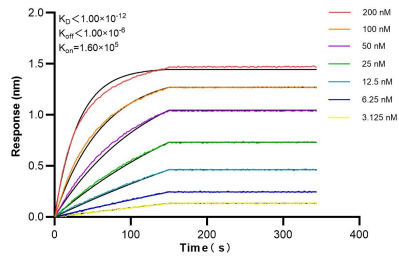
Selected Validation Data



HeLa cells were subjected to SDS PAGE followed by western blot with 84708-1-RR (C12orf29 antibody) at dilution of 1:10000 incubated at room temperature for 1.5 hours. This data was developed using the same antibody clone with 84708-1-PBS in a different storage buffer formulation.



Cytometric bead array standard curve of MP01512-1, C12orf29 Recombinant Matched Antibody Pair, PBS Only. Capture antibody: 84708-1-PBS. Detection antibody: 84708-2-PBS. Standard: Ag35681. Range: 0.625-80 ng/mL.



Biolayer interferometry (BLI) kinetic assays of 84708-1-RR against Human C12orf29 were performed. The affinity constant is below 1 pM.