

For Research Use Only

# C12orf29 Recombinant antibody

Catalog Number: 84708-1-RR



## Basic Information

Catalog Number:

84708-1-RR

Size:

100ul , Concentration: 1000 µg/ml by Nanodrop;

Source:

Rabbit

Isotype:

IgG

Immunogen Catalog Number:

AG35681

GenBank Accession Number:

NM\_001009894.2

GeneID (NCBI):

91298

UNIPROT ID:

Q8N999

Full Name:

chromosome 12 open reading frame 29

Calculated MW:

37kDa 325aa

Observed MW:

37 kDa

Purification Method:

Protein A purification

CloneNo.:

242163C3

Recommended Dilutions:

WB 1:5000-1:50000

## Applications

Tested Applications:

WB, ELISA

Species Specificity:

human, rat

Positive Controls:

WB : HeLa cells, U-87 MG cells, LNCaP cells, K-562 cells, rat pancreas tissue

## Background Information

C12orf29, also known as RLIG1, is a 37 kDa human protein consisting of 325 amino acids. It catalyzes ATP-dependent RNA ligation via a three-step mechanism involving tandem auto- and RNA AMPylation (PMID: 36792600).

## Storage

Storage:

Store at -20°C. Stable for one year after shipment.

Storage Buffer:

PBS with 0.02% sodium azide and 50% glycerol pH 7.3.

Aliquoting is unnecessary for -20°C storage

\*\*\* 20ul sizes contain 0.1% BSA

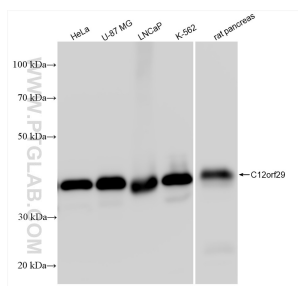
For technical support and original validation data for this product please contact:

T: 1 (888) 4PTGLAB (1-888-478-4522) (toll free in USA), or 1(312) 455-8498 (outside USA)

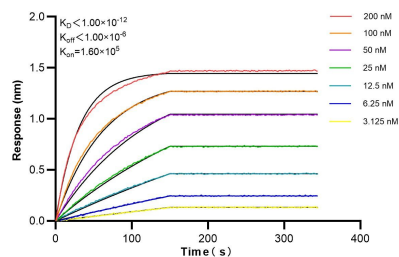
E: [proteintech@ptglab.com](mailto:proteintech@ptglab.com)  
W: [ptglab.com](http://ptglab.com)

This product is exclusively available under Proteintech Group brand and is not available to purchase from any other manufacturer.

## Selected Validation Data



HeLa cells were subjected to SDS PAGE followed by western blot with 84708-1-RR (C12orf29 antibody) at dilution of 1:10000 incubated at room temperature for 1.5 hours.



Biolayer interferometry (BLI) kinetic assays of 84708-1-RR against Human C12orf29 were performed. The affinity constant is below 1 pM.