

For Research Use Only

OTUD3 Recombinant antibody, PBS Only (Capture)

Catalog Number: 84717-1-PBS



Basic Information

Catalog Number: 84717-1-PBS	GenBank Accession Number: NM_015207	Purification Method: Protein A purification
Size: 100ug , Concentration: 1 mg/ml by Nanodrop;	GeneID (NCBI): 23252	CloneNo.: 242202B11
Source: Rabbit	UNIPROT ID: Q5T2D3	
Isotype: IgG	Full Name: OTU domain containing 3	
Immunogen Catalog Number: AG30425	Calculated MW: 45 kDa	
	Observed MW: 45 kDa	

Applications

Tested Applications:
WB, Cytometric bead array, Indirect ELISA

Species Specificity:
human, mouse

Product Information

84717-1-PBS targets OTUD3 as part of a matched antibody pair:

MP01521-2: 84717-1-PBS capture and 84717-2-PBS detection (validated in Cytometric bead array)

Unconjugated rabbit recombinant monoclonal antibody in PBS only (BSA and azide free) storage buffer at a concentration of 1 mg/mL, ready for conjugation. Created using Proteintech's proprietary in-house recombinant technology. Recombinant production enables unrivalled batch-to-batch consistency, easy scale-up, and future security of supply.

This conjugation ready format makes antibodies ideal for use in many applications including: ELISAs, multiplex assays requiring matched pairs, mass cytometry, and multiplex imaging applications. Antibody use should be optimized by the end user for each application and assay.

Background Information

OTUD3 is a kind of deubiquitinating enzyme that hydrolyzes 'Lys-6'- and 'Lys-11'-linked polyubiquitin. It's an important regulator of energy metabolism. Glucose and fatty acids trigger its nuclear translocation by CBP-dependent acetylation. In the nucleus, deubiquitinates and stabilizes the nuclear receptor PPAR δ regulating the expression of various genes involved in glucose and lipid metabolism and oxidative phosphorylation.

Storage

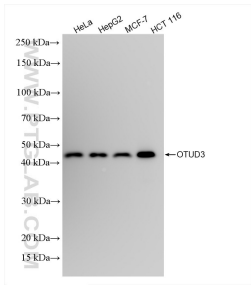
Storage:
Store at -80°C.

Storage Buffer:
PBS Only

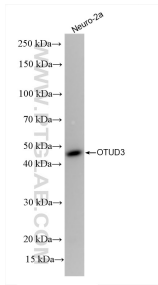
For technical support and original validation data for this product please contact:
T: 1 (888) 4PTGLAB (1-888-478-4522) (toll free in USA), or 1(312) 455-8498 (outside USA)
E: proteintech@ptglab.com
W: ptglab.com

This product is exclusively available under Proteintech Group brand and is not available to purchase from any other manufacturer.

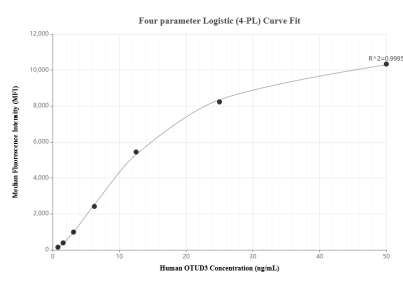
Selected Validation Data



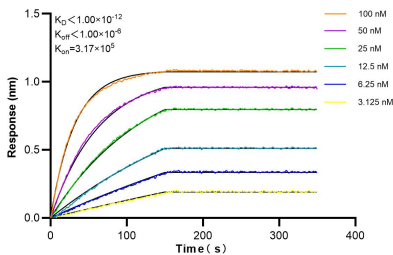
HeLa cells were subjected to SDS PAGE followed by western blot with 84717-1-RR (OTUD3 antibody) at dilution of 1:10000 incubated at room temperature for 1.5 hours. This data was developed using the same antibody clone with 84717-1-PBS in a different storage buffer formulation.



Neuro-2a cells were subjected to SDS PAGE followed by western blot with 84717-1-RR (OTUD3 antibody) at dilution of 1:10000 incubated at room temperature for 1.5 hours. This data was developed using the same antibody clone with 84717-1-PBS in a different storage buffer formulation.



Cytometric bead array standard curve of MP01521-2, OTUD3 Recombinant Matched Antibody Pair, PBS Only. Capture antibody: 84717-1-PBS. Detection antibody: 84717-2-PBS. Standard: Ag30425. Range: 0.781-50 ng/mL.



Biolayer interferometry (BLI) kinetic assays of 84717-1-RR against Human OTUD3 were performed. The affinity constant is below 1 pM.