

For Research Use Only

# JAM-A/CD321 Recombinant antibody, PBS Only (Detector)

Catalog Number: 84720-3-PBS



## Basic Information

**Catalog Number:**

84720-3-PBS

**Size:**

100ug , Concentration: 1 mg/ml by  
Nanodrop;

**Source:**

Rabbit

**Isotype:**

IgG

**GenBank Accession Number:**

NM\_016946.6

**GeneID (NCBI):**

50848

**UNIPROT ID:**

Q9Y624-1

**Full Name:**

F11 receptor

**Calculated MW:**

33kDa

**Purification Method:**

Protein A purification

**CloneNo.:**

242290F8

## Applications

**Tested Applications:**

Cytometric bead array, Sandwich ELISA, Indirect ELISA,  
Sample test

**Species Specificity:**

human

## Product Information

84720-3-PBS targets JAM-A/CD321 as part of a matched antibody pair:

MP00247-2: 84720-1-PBS capture and 84720-3-PBS detection (validated in Cytometric bead array, Sandwich ELISA)

MP00247-3: 84720-2-PBS capture and 84720-3-PBS detection (validated in Cytometric bead array)

Unconjugated rabbit recombinant monoclonal antibody in PBS only (BSA and azide free) storage buffer at a concentration of 1 mg/mL, ready for conjugation. Created using Proteintech's proprietary in-house recombinant technology. Recombinant production enables unrivalled batch-to-batch consistency, easy scale-up, and future security of supply.

This conjugation ready format makes antibodies ideal for use in many applications including: ELISAs, multiplex assays requiring matched pairs, mass cytometry, and multiplex imaging applications. Antibody use should be optimized by the end user for each application and assay.

## Storage

**Storage:**

Store at -80°C.

**Storage Buffer:**

PBS Only

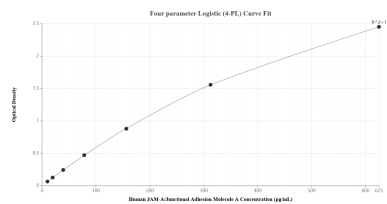
For technical support and original validation data for this product please contact:

T: 1 (888) 4PTGLAB (1-888-478-4522) (toll free  
in USA), or 1(312) 455-8498 (outside USA)

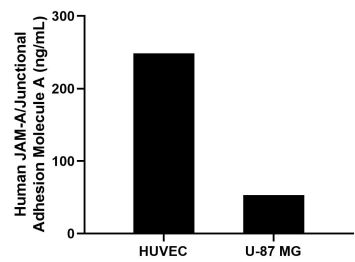
E: [proteintech@ptglab.com](mailto:proteintech@ptglab.com)  
W: [ptglab.com](http://ptglab.com)

This product is exclusively available under Proteintech Group brand and is not available to purchase from any other manufacturer.

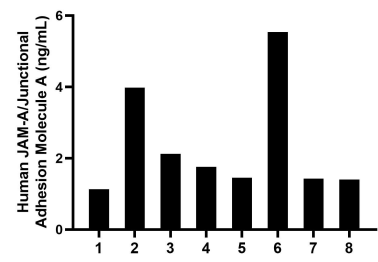
Selected Validation Data



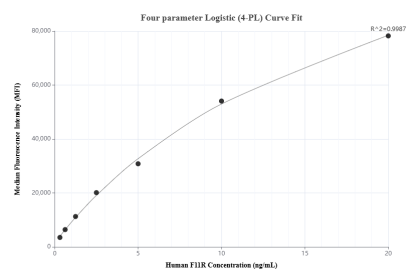
Sandwich ELISA standard curve of MP00247-2, Human JAM-A/Junctional Adhesion Molecule A Recombinant Matched Antibody Pair - PBS only. 84720-1-PBS was coated to a plate as the capture antibody and incubated with serial dilutions of standard Eg1372. 84720-3-PBS was HRP conjugated as the detection antibody. Range: 9.77-625 pg/mL.



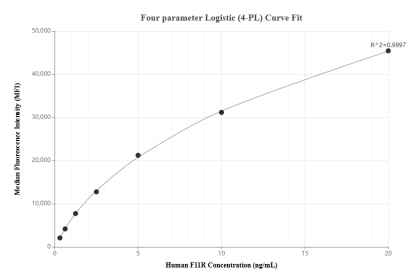
The mean JAM-A/Junctional Adhesion Molecule A concentration was determined to be 248.8 ng/mL in HUVEC cell extract based on a 1.1 mg/mL extract load and 53.3 ng/mL in U-87 MG cell extract based on a 2.0 mg/mL extract load.



Serum of eight individual healthy human donors was measured. The JAM-A/Junctional Adhesion Molecule A concentration of detected samples was determined to be 2.4 ng/mL with a range of 1.1-5.5 ng/mL.



Cytometric bead array standard curve of MP00247-2, F11R Recombinant Matched Antibody Pair, PBS Only. Capture antibody: 84720-1-PBS. Detection antibody: 84720-3-PBS. Standard: Eg1372. Range: 0.313-20 ng/mL.



Cytometric bead array standard curve of MP00247-3, F11R Recombinant Matched Antibody Pair, PBS Only. Capture antibody: 84720-2-PBS. Detection antibody: 84720-3-PBS. Standard: Eg1372. Range: 0.313-20 ng/mL.