

For Research Use Only

GP2 Recombinant antibody, PBS Only (Detector)

Catalog Number: 84728-3-PBS



Basic Information

Catalog Number: 84728-3-PBS	GenBank Accession Number: NM_001007240.2	Purification Method: Protein A purification
Size: 100ug , Concentration: 1 mg/ml by Nanodrop;	GeneID (NCBI): 2813	CloneNo.: 242300H5
Source: Rabbit	UNIPROT ID: P55259-1	
Isotype: IgG	Full Name: glycoprotein 2 (zymogen granule membrane)	
	Calculated MW: 59 kDa	

Applications

Tested Applications:
Cytometric bead array, Sandwich ELISA, Indirect ELISA, Sample test

Species Specificity:
human

Product Information

84728-3-PBS targets GP2 as part of a matched antibody pair:

MP01513-1: 84728-1-PBS capture and 84728-3-PBS detection (validated in Cytometric bead array)

MP01513-2: 84728-2-PBS capture and 84728-3-PBS detection (validated in Cytometric bead array, Sandwich ELISA)

Unconjugated rabbit recombinant monoclonal antibody in PBS only (BSA and azide free) storage buffer at a concentration of 1 mg/mL, ready for conjugation. Created using Proteintech's proprietary in-house recombinant technology. Recombinant production enables unrivalled batch-to-batch consistency, easy scale-up, and future security of supply.

This conjugation ready format makes antibodies ideal for use in many applications including: ELISAs, multiplex assays requiring matched pairs, mass cytometry, and multiplex imaging applications. Antibody use should be optimized by the end user for each application and assay.

Storage

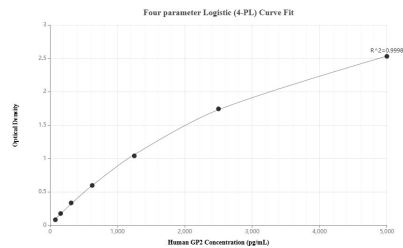
Storage:
Store at -80°C.

Storage Buffer:
PBS Only

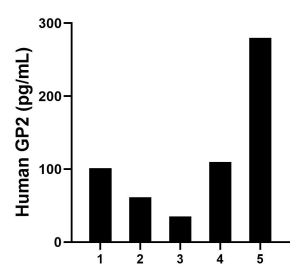
For technical support and original validation data for this product please contact:
T: 1 (888) 4PTGLAB (1-888-478-4522) (toll free in USA), or 1(312) 455-8498 (outside USA)
E: proteintech@ptglab.com
W: ptglab.com

This product is exclusively available under Proteintech Group brand and is not available to purchase from any other manufacturer.

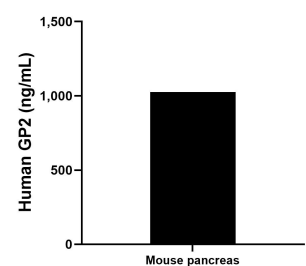
Selected Validation Data



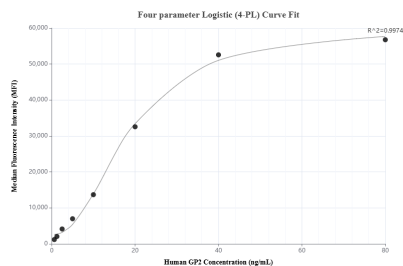
Sandwich ELISA standard curve of MP01513-2, Human GP2 Recombinant Matched Antibody Pair - PBS only. 84728-2-PBS was coated to a plate as the capture antibody and incubated with serial dilutions of standard Eg2446. 84728-3-PBS was HRP conjugated as the detection antibody. Range: 78.1-5000 pg/mL



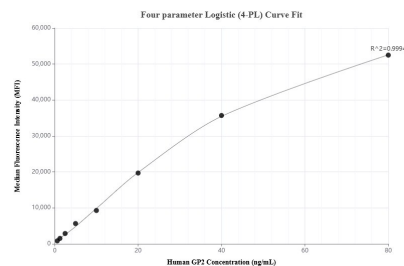
Serum of five individual healthy human donors was measured. The human GP2 concentration of detected samples was determined to be 117.6 pg/mL with a range of 35.0 - 279.9 pg/mL



The mean GP2 concentration was determined to be 1,025.47 ng/mL in mouse pancreas tissue extract based on a 2.3 mg/mL extract load.



Cytometric bead array standard curve of MP01513-1, GP2 Recombinant Matched Antibody Pair, PBS Only. Capture antibody: 84728-1-PBS. Detection antibody: 84728-3-PBS. Standard: Eg2446. Range: 0.625-80 ng/mL



Cytometric bead array standard curve of MP01513-2, GP2 Recombinant Matched Antibody Pair, PBS Only. Capture antibody: 84728-2-PBS. Detection antibody: 84728-3-PBS. Standard: Eg2446. Range: 0.625-80 ng/mL