

For Research Use Only

# GP2 Recombinant antibody

Catalog Number: 84728-4-RR



## Basic Information

<b>Catalog Number:</b> 84728-4-RR	<b>GenBank Accession Number:</b> NM_001007240.2	<b>Purification Method:</b> Protein A purification
<b>Size:</b> 100ul , Concentration: 1000 µg/ml by Nanodrop;	<b>GeneID (NCBI):</b> 2813	<b>CloneNo.:</b> 242300F9
<b>Source:</b> Rabbit	<b>UNIPROT ID:</b> P55259-1	<b>Recommended Dilutions:</b> WB 1:1000-1:6000
<b>Isotype:</b> IgG	<b>Full Name:</b> glycoprotein 2 (zymogen granule membrane)	
	<b>Calculated MW:</b> 59 kDa	
	<b>Observed MW:</b> 70 kDa	

## Applications

<b>Tested Applications:</b> WB, ELISA	<b>Positive Controls:</b> WB : mouse brain tissue, rat brain tissue
<b>Species Specificity:</b> human, mouse, rat	

## Background Information

Pancreatic secretory granule membrane major glycoprotein (GP2) is the most abundant membrane component of zymogen granules secreted by pancreatic acinar cells (PMID: 8190715). GP2 associates with the plasma membrane via glycosylphosphatidylinositol (GPI) linkage. It is released from the membrane of mature zymogen granules by an enzymatic mechanism (PMID: 2011597). GP2 plays a role in defense against adhesive and invasive commensal bacteria during intestinal inflammation (PMID: 33594081). GP2 is preferentially expressed in acinar cell carcinomas of the pancreas but the glycoprotein can rarely also be expressed in a variety of other tumor entities (PMID: 36137400). The apparent molecular weight of GP2 is 70-100 kDa, which is larger than the calculated molecular weight, due to glycosylation (PMID: 19627615; 30186250).

## Storage

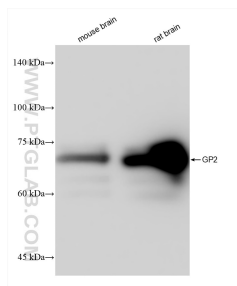
**Storage:**  
Store at -20°C. Stable for one year after shipment.  
**Storage Buffer:**  
PBS with 0.02% sodium azide and 50% glycerol pH 7.3.  
**Aliquoting is unnecessary for -20°C storage**

\*\*\* 20ul sizes contain 0.1% BSA

For technical support and original validation data for this product please contact:  
T: 1 (888) 4PTGLAB (1-888-478-4522) (toll free in USA), or 1(312) 455-8498 (outside USA)  
E: [proteintech@ptglab.com](mailto:proteintech@ptglab.com)  
W: [ptglab.com](http://ptglab.com)

This product is exclusively available under Proteintech Group brand and is not available to purchase from any other manufacturer.

## Selected Validation Data



mouse brain tissue were subjected to SDS PAGE followed by western blot with 84728-4-RR (GP2 antibody) at dilution of 1:3000 incubated at room temperature for 1.5 hours.