

For Research Use Only

# Ferritin light chain 1 Recombinant antibody

Catalog Number: 84731-7-RR



## Basic Information

**Catalog Number:**

84731-7-RR

**Size:**

100ul, Concentration: 1000 µg/ml by Nanodrop;

**Source:**

Rabbit

**Isotype:**

IgG

**GenBank Accession Number:**

NM\_022500.4

**GeneID (NCBI):**

29292

**UNIPROT ID:**

P02793

**Full Name:**

ferritin, light polypeptide

**Calculated MW:**

21 kDa

**Observed MW:**

18-20 kDa

**Purification Method:**

Protein A purification

**CloneNo.:**

242299F7

**Recommended Dilutions:**

WB 1:5000-1:50000

## Applications

**Tested Applications:**

WB, ELISA

**Species Specificity:**

mouse, rat

**Positive Controls:**

WB : mouse testis tissue, mouse liver tissue, mouse spleen tissue

## Background Information

FTL belongs to the ferritin family. It stores iron in a soluble, non-toxic, readily available form. FTL is important for iron homeostasis. It plays a role in delivery of iron to cells. FTL mediates iron uptake in capsule cells of the developing kidney. Mutation of FTL will cause hereditary hyperferritinemia-cataract syndrome (HHCS) or neurodegeneration with brain iron accumulation type 3 (NBIA3). Ferritin light polypeptide (FTL) and ferritin heavy polypeptide (FTH1) were the main constituents the striatum and cerebellar cortex revealed.

## Storage

**Storage:**

Store at -20°C. Stable for one year after shipment.

**Storage Buffer:**

PBS with 0.02% sodium azide and 50% glycerol pH 7.3.

Aliquoting is unnecessary for -20°C storage

\*\*\* 20ul sizes contain 0.1% BSA

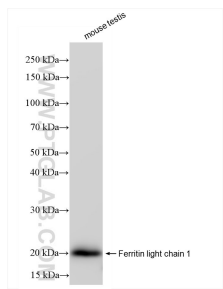
For technical support and original validation data for this product please contact:

T: 1 (888) 4PTGLAB (1-888-478-4522) (toll free in USA), or 1(312) 455-8498 (outside USA)

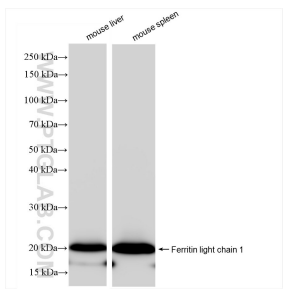
E: [proteintech@ptglab.com](mailto:proteintech@ptglab.com)  
W: [ptglab.com](http://ptglab.com)

This product is exclusively available under Proteintech Group brand and is not available to purchase from any other manufacturer.

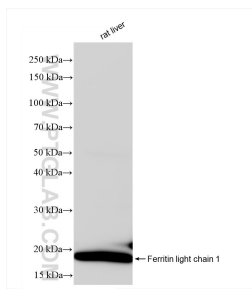
## Selected Validation Data



mouse testis tissue were subjected to SDS PAGE followed by western blot with 84731-7-RR (Ferritin light chain 1 antibody) at dilution of 1:10000 incubated at room temperature for 1.5 hours.



Various lysates were subjected to SDS PAGE followed by western blot with 84731-7-RR (Ferritin light chain 1 antibody) at dilution of 1:10000 incubated at room temperature for 1.5 hours.



rat liver tissue were subjected to SDS PAGE followed by western blot with 84731-7-RR (Ferritin light chain 1 antibody) at dilution of 1:1000 incubated at room temperature for 1.5 hours.