

For Research Use Only

MXI1 Recombinant antibody

Catalog Number: 84733-5-RR



Basic Information

Catalog Number:

84733-5-RR

Size:

100ul, Concentration: 1000 ug/ml by Nanodrop;

Source:

Rabbit

Isotype:

IgG

Immunogen Catalog Number:

AG3024

GenBank Accession Number:

BC012907

GeneID (NCBI):

4601

UNIPROT ID:

P50539

Full Name:

MAX interactor 1

Calculated MW:

228 aa, 26 kDa

Observed MW:

36 kDa

Purification Method:

Protein A purification

CloneNo.:

242089D2

Recommended Dilutions:

WB 1:1000-1:6000

Applications

Tested Applications:

WB, FC (Intra), ELISA

Species Specificity:

human, mouse

Positive Controls:

WB : A549 cells, HeLa cells, mouse brain tissue

Background Information

MXI1 is a transcription factor containing a basic helix-loop-helix leucine zipper (bHLHzip) and belongs to the Myc-Max-Mad transcriptional network. It is a transcriptional repressor thought to negatively regulate MYC function, and is therefore a potential tumor suppressor. This protein inhibits the transcriptional activity of MYC by competing for MAX, another basic helix-loop-helix protein that binds to MYC and is required for its function. Defects in this gene are frequently found in patients with prostate tumors.

Storage

Storage:

Store at -20°C. Stable for one year after shipment.

Storage Buffer:

PBS with 0.02% sodium azide and 50% glycerol pH 7.3.

Aliquoting is unnecessary for -20°C storage

*** 20ul sizes contain 0.1% BSA

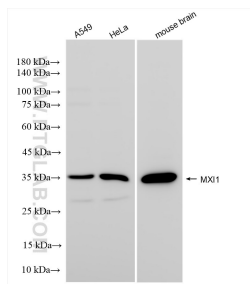
For technical support and original validation data for this product please contact:

T: 1 (888) 4PTGLAB (1-888-478-4522) (toll free in USA), or 1(312) 455-8498 (outside USA)

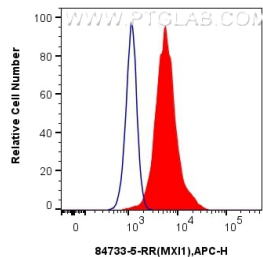
E: proteintech@ptglab.com
W: ptglab.com

This product is exclusively available under Proteintech Group brand and is not available to purchase from any other manufacturer.

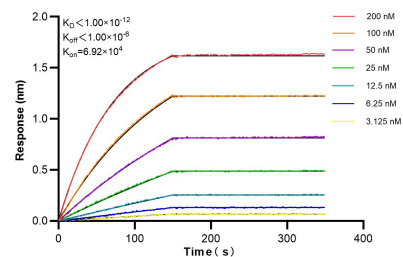
Selected Validation Data



Various lysates were subjected to SDS PAGE followed by western blot with 84733-5-RR (MXI1 antibody) at dilution of 1:3000 incubated at room temperature for 1.5 hours.



1×10^6 HeLa cells were intracellularly stained with 0.25 μ g MXI1 Recombinant antibody (84733-5-RR, Clone:242089D2) and Multi-rAb CoraLite® Plus 647-Goat Anti-Rabbit Recombinant Secondary Antibody (H+L) (RGAR005)(red), or 0.25 μ g Rabbit IgG Isotype Control Recombinant Antibody (98136-1-RR, Clone: 240953C9) (blue). Cells were fixed with 4% PFA and permeabilized with Flow Cytometry Perm Buffer (PF00011-C).



Biolayer interferometry (BLI) kinetic assays of 84733-5-RR against Human MXI1 were performed. The affinity constant is below 1 pM.