

For Research Use Only

RAB7A Recombinant antibody, PBS Only

Catalog Number: 84741-1-PBS



Basic Information

Catalog Number:

84741-1-PBS

Size:

100ug , Concentration: 1 mg/ml by Nanodrop;

Source:

Rabbit

Isotype:

IgG

GenBank Accession Number:

NM_004637

GeneID (NCBI):

7879

UNIPROT ID:

P51149

Full Name:

RAB7A, member RAS oncogene family

Calculated MW:

23 kDa

Observed MW:

23 kDa

Purification Method:

Protein A purification

CloneNo.:

241948B4

Applications

Tested Applications:

WB, IF/ICC, FC (Intra), Indirect ELISA

Species Specificity:

human, mouse, rat

Background Information

RAB7A, also named as RAB7, belongs to the small GTPase superfamily and Rab family. It is involved in late endocytic transport. RAB7A contributes to the maturation of phagosomes (acidification). Defects in RAB7A are the cause of Charcot-Marie-Tooth disease type 2B (CMT2B). This antibody is specific to RAB7A.

Storage

Storage:

Store at -80°C.

Storage Buffer:

PBS Only

For technical support and original validation data for this product please contact:

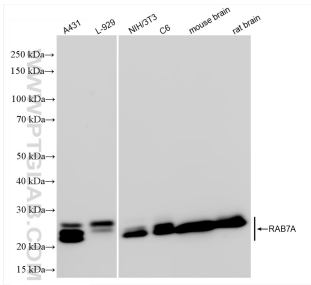
T: 1 (888) 4PTGLAB (1-888-478-4522) (toll free in USA), or 1(312) 455-8498 (outside USA)

E: proteintech@ptglab.com

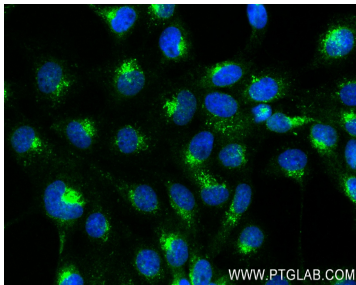
W: ptglab.com

This product is exclusively available under Proteintech Group brand and is not available to purchase from any other manufacturer.

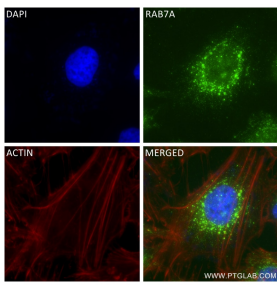
Selected Validation Data



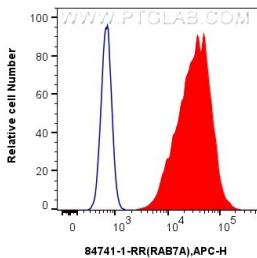
Various lysates were subjected to SDS PAGE followed by western blot with 84741-1-RR (RAB7A antibody) at dilution of 1:10000 incubated at room temperature for 1.5 hours. This data was developed using the same antibody clone with 84741-1-PBS in a different storage buffer formulation.



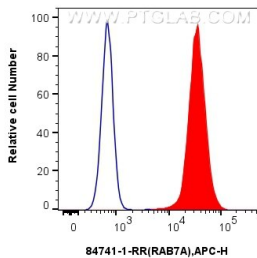
Immunofluorescent analysis of (4% PFA) fixed A431 cells using RAB7A antibody (84741-1-RR, Clone: 241948B4) at dilution of 1:400 and CoraLite®488-Conjugated Goat Anti-Rabbit IgG(H+L) (SA00013-2). This data was developed using the same antibody clone with 84741-1-PBS in a different storage buffer formulation.



Immunofluorescent analysis of (4% PFA) fixed HeLa cells using RAB7A antibody (84741-1-RR, Clone: 241948B4) at dilution of 1:400 and CoraLite®488-Conjugated Goat Anti-Rabbit IgG(H+L) (SA00013-2), CL594-Phalloidin (red). This data was developed using the same antibody clone with 84741-1-PBS in a different storage buffer formulation.



1x10⁶ A431 cells were intracellularly stained with 0.25 ug RAB7A Recombinant antibody (84741-1-RR, Clone:241948B4) and APC-Conjugated Goat Anti-Rabbit IgG(H+L) (red), or 0.25 ug Rabbit IgG Isotype Control Recombinant Antibody (98136-1-RR, Clone: 240953C9) (blue). Cells were fixed with 4% PFA and permeabilized with Flow Cytometry Perm Buffer (PF00011-C). This data was developed using the same antibody clone with 84741-1-PBS in a different storage buffer



1x10⁶ K-562 cells were intracellularly stained with 0.25 ug RAB7A Recombinant antibody (84741-1-RR, Clone:241948B4) and APC-Conjugated Goat Anti-Rabbit IgG(H+L) (red), or 0.25 ug Rabbit IgG Isotype Control Recombinant Antibody (98136-1-RR, Clone: 240953C9) (blue). Cells were fixed with 4% PFA and permeabilized with Flow Cytometry Perm Buffer (PF00011-C). This data was developed using the same antibody clone with 84741-1-PBS in a different storage buffer