

For Research Use Only

# IDI2 Recombinant antibody, PBS Only

Catalog Number: 84746-1-PBS



## Basic Information

Catalog Number:

84746-1-PBS

Size:

100ug, Concentration: 1 mg/ml by  
Nanodrop;

Source:

Rabbit

Isotype:

IgG

Immunogen Catalog Number:

AG10098

GenBank Accession Number:

BC017778

GeneID (NCBI):

91734

UNIPROT ID:

Q9BXS1

Full Name:

isopentenyl-diphosphate delta  
isomerase 2

Calculated MW:

227 aa, 27 kDa

Observed MW:

29 kDa

Purification Method:

Protein A purification

CloneNo.:

241885H3

## Applications

Tested Applications:

WB, Indirect ELISA

Species Specificity:

human

## Storage

Storage:

Store at -80°C.

Storage Buffer:

PBS Only

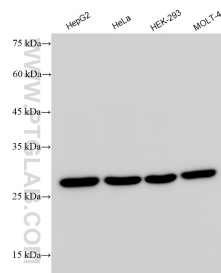
For technical support and original validation data for this product please contact:

T: 1 (888) 4PTGLAB (1-888-478-4522) (toll free  
in USA), or 1(312) 455-8498 (outside USA)

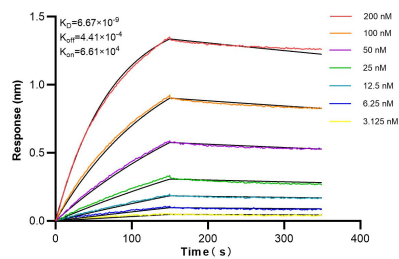
E: [proteintech@ptglab.com](mailto:proteintech@ptglab.com)  
W: [ptglab.com](http://ptglab.com)

This product is exclusively available under Proteintech Group brand and is not available to purchase from any other manufacturer.

## Selected Validation Data



Various lysates were subjected to SDS PAGE followed by western blot with 84746-1-RR (IDI2 antibody) at dilution of 1:1000 incubated at room temperature for 1.5 hours. This data was developed using the same antibody clone with 84746-1-PBS in a different storage buffer formulation.



Biolayer interferometry (BLI) kinetic assays of 84746-1-RR against Human IDI2 were performed. The affinity constant is 6.67 nM.