

For Research Use Only

CYP1A2-Specific Recombinant antibody, PBS Only

Catalog Number: 84751-1-PBS



Basic Information

Catalog Number:

84751-1-PBS

Size:

100ug, Concentration: 1 mg/ml by Nanodrop;

Source:

Rabbit

Isotype:

IgG

GenBank Accession Number:

NM_000761

GeneID (NCBI):

1544

UNIPROT ID:

P05177

Full Name:

cytochrome P450, family 1, subfamily A, polypeptide 2

Calculated MW:

58 kDa

Observed MW:

58 kDa

Purification Method:

Protein A purification

CloneNo.:

241922C4

Applications

Tested Applications:

IHC, Indirect ELISA

Species Specificity:

human, mouse

Background Information

CYP1A2, also named as CP12; P3-450 and P450(PA), belongs to the cytochrome P450 family. Cytochromes P450 are a group of heme-thiolate monooxygenases. In liver microsomes, CYP1A2 is involved in an NADPH-dependent electron transport pathway. It oxidizes a variety of structurally unrelated compounds, including steroids, fatty acids, and xenobiotics. Most active of CYP1A2 is in catalyzing 2-hydroxylation. Caffeine is metabolized primarily by cytochrome CYP1A2 in the liver through an initial N3-demethylation. It also acts in the metabolism of aflatoxin B1 and acetaminophen. CYP1A2 participates in the bioactivation of carcinogenic aromatic and heterocyclic amines. It catalyzes the reaction: $RH + \text{reduced flavoprotein} + O_2 = ROH + \text{oxidized flavoprotein} + H_2O$. The antibody is specific to CYP1A2.

Storage

Storage:

Store at -80°C.

Storage Buffer:

PBS Only

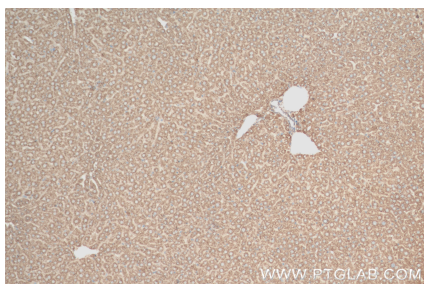
For technical support and original validation data for this product please contact:

T: 1 (888) 4PTGLAB (1-888-478-4522) (toll free in USA), or 1(312) 455-8498 (outside USA)

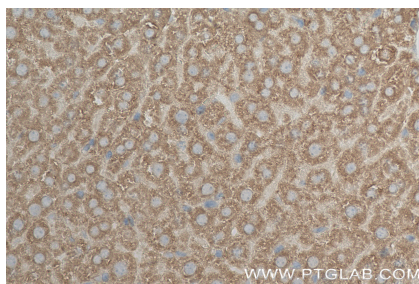
E: proteintech@ptglab.com
W: ptglab.com

This product is exclusively available under Proteintech Group brand and is not available to purchase from any other manufacturer.

Selected Validation Data



Immunohistochemical analysis of paraffin-embedded mouse liver tissue slide using 84751-1-RR (CYP1A2-Specific antibody) at dilution of 1:250 (under 10x lens). Heat mediated antigen retrieval with Tris-EDTA buffer (pH 9.0). This data was developed using the same antibody clone with 84751-1-PBS in a different storage buffer formulation.



Immunohistochemical analysis of paraffin-embedded mouse liver tissue slide using 84751-1-RR (CYP1A2-Specific antibody) at dilution of 1:250 (under 40x lens). Heat mediated antigen retrieval with Tris-EDTA buffer (pH 9.0). This data was developed using the same antibody clone with 84751-1-PBS in a different storage buffer formulation.