

For Research Use Only

CYP1A2-Specific Recombinant antibody

Catalog Number: 84751-1-RR



Basic Information

Catalog Number: 84751-1-RR	GenBank Accession Number: NM_000761	Purification Method: Protein A purification
Size: 100ul , Concentration: 1000 µg/ml by Nanodrop;	GeneID (NCBI): 1544	CloneNo.: 241922C4
Source: Rabbit	UNIPROT ID: P05177	Recommended Dilutions: IHC 1:125-1:500
Isotype: IgG	Full Name: cytochrome P450, family 1, subfamily A, polypeptide 2	
	Calculated MW: 58 kDa	
	Observed MW: 58 kDa	

Applications

Tested Applications: IHC, ELISA	Positive Controls: IHC : mouse liver tissue,
Species Specificity: human, mouse	
Note-IHC: suggested antigen retrieval with TE buffer pH 9.0; (*) Alternatively, antigen retrieval may be performed with citrate buffer pH 6.0	

Background Information

CYP1A2, also named as CP12; P3-450 and P450(PA), belongs to the cytochrome P450 family. Cytochromes P450 are a group of heme-thiolate monooxygenases. In liver microsomes, CYP1A2 is involved in an NADPH-dependent electron transport pathway. It oxidizes a variety of structurally unrelated compounds, including steroids, fatty acids, and xenobiotics. Most active of CYP1A2 is in catalyzing 2-hydroxylation. Caffeine is metabolized primarily by cytochrome CYP1A2 in the liver through an initial N3-demethylation. It also acts in the metabolism of aflatoxin B1 and acetaminophen. CYP1A2 participates in the bioactivation of carcinogenic aromatic and heterocyclic amines. It catalyzes the reaction: RH + reduced flavoprotein + O₂ = ROH + oxidized flavoprotein + H₂O. The antibody is specific to CYP1A2.

Storage

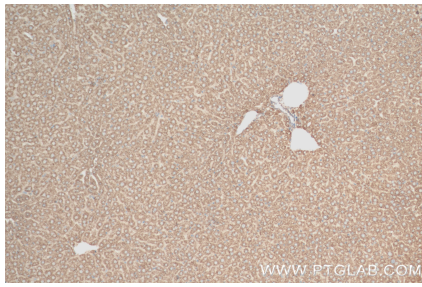
Storage:
Store at -20°C. Stable for one year after shipment.
Storage Buffer:
PBS with 0.02% sodium azide and 50% glycerol pH 7.3.
Aliquoting is unnecessary for -20°C storage

*** 20ul sizes contain 0.1% BSA

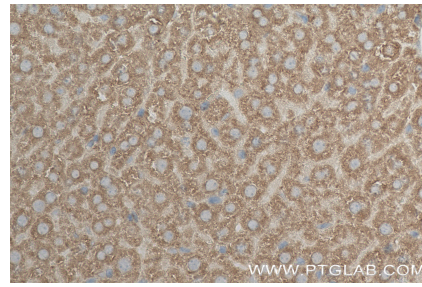
For technical support and original validation data for this product please contact:
T: 1 (888) 4PTGLAB (1-888-478-4522) (toll free in USA), or 1(312) 455-8498 (outside USA)
E: proteintech@ptglab.com
W: ptglab.com

This product is exclusively available under Proteintech Group brand and is not available to purchase from any other manufacturer.

Selected Validation Data



Immunohistochemical analysis of paraffin-embedded mouse liver tissue slide using 84751-1-RR (CYP1A2-Specific antibody) at dilution of 1:250 (under 10x lens). Heat mediated antigen retrieval with Tris-EDTA buffer (pH 9.0).



Immunohistochemical analysis of paraffin-embedded mouse liver tissue slide using 84751-1-RR (CYP1A2-Specific antibody) at dilution of 1:250 (under 40x lens). Heat mediated antigen retrieval with Tris-EDTA buffer (pH 9.0).