

For Research Use Only

# Mouse BTLA Recombinant antibody, PBS Only

Catalog Number: 84754-5-PBS



## Basic Information

<b>Catalog Number:</b> 84754-5-PBS	<b>GenBank Accession Number:</b> AAI08964.1	<b>Purification Method:</b> Protein A purification
<b>Size:</b> 100ug, Concentration: 1 mg/ml by Nanodrop;	<b>GeneID (NCBI):</b> 208154	<b>CloneNo.:</b> 242133E5
<b>Source:</b> Rabbit	<b>UNIPROT ID:</b> Q32MV9	
<b>Isotype:</b> IgG	<b>Full Name:</b> B and T lymphocyte associated	
	<b>Calculated MW:</b> 34kDa	
	<b>Observed MW:</b> 50 kDa	

## Applications

**Tested Applications:**  
WB, IF/ICC, Indirect ELISA

**Species Specificity:**  
mouse

## Background Information

BTLA, or B and T lymphocyte attenuator, is a member of the CD28 superfamily and is a type I membrane glycoprotein identified as an inhibitory receptor (PMID: 33859648). BTLA is extensively expressed in lymph nodes, thymus, and spleen, with little or no expression in organs such as the heart, kidney, brain, and liver (PMID: 33859648). Among immune cells, BTLA is primarily expressed in B and T cells, with higher expression in B cells compared to T cells in the mouse spleen (PMID: 33859648). BTLA plays a crucial role in regulating stimulatory and inhibitory signals in immune responses.

## Storage

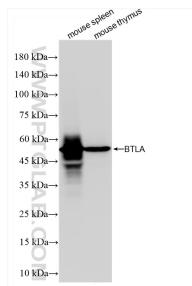
**Storage:**  
Store at -80°C.

**Storage Buffer:**  
PBS Only

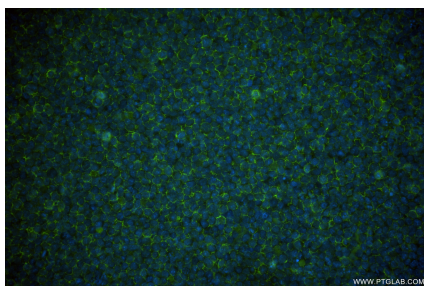
For technical support and original validation data for this product please contact:  
T: 1 (888) 4PTGLAB (1-888-478-4522) (toll free in USA), or 1(312) 455-8498 (outside USA)  
E: [proteintech@ptglab.com](mailto:proteintech@ptglab.com)  
W: [ptglab.com](http://ptglab.com)

This product is exclusively available under Proteintech Group brand and is not available to purchase from any other manufacturer.

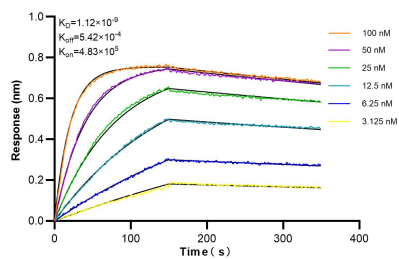
## Selected Validation Data



Various lysates were subjected to SDS PAGE followed by western blot with 84754-5-RR (BTLA antibody) at dilution of 1:10000 incubated at room temperature for 1.5 hours. This data was developed using the same antibody clone with 84754-5-PBS in a different storage buffer formulation.



Immunofluorescent analysis of (4% PFA) fixed A20 cells using BTLA antibody (84754-5-RR, Clone: 242133E5 ) at dilution of 1:400 and CoraLite®488-Conjugated Goat Anti-Rabbit IgG(H+L) (SA00013-2). This data was developed using the same antibody clone with 84754-5-PBS in a different storage buffer formulation.



Biolayer interferometry (BLI) kinetic assays of 84754-5-RR against Mouse BTLA were performed. The affinity constant is 1.12 nM.