

For Research Use Only

# CAB39 Recombinant antibody

Catalog Number: 84760-4-RR



## Basic Information

Catalog Number:

84760-4-RR

Size:

100ul , Concentration: 1000 µg/ml by Nanodrop;

Source:

Rabbit

Isotype:

IgG

Immunogen Catalog Number:

AG36153

GenBank Accession Number:

BC020570

GeneID (NCBI):

51719

UNIPROT ID:

Q9Y376

Full Name:

calcium binding protein 39

Observed MW:

39-40 kDa

Purification Method:

Protein A purification

CloneNo.:

242094G11

Recommended Dilutions:

WB 1:2000-1:10000

## Applications

Tested Applications:

WB, ELISA

Species Specificity:

human, mouse, rat

Positive Controls:

WB : HeLa cells, HepG2 cells, U-251 cells, MCF-7 cells, L-929 cells, C2C12 cells, C6 cells

## Background Information

CAB39 (Calcium-binding protein 39), also called MO25, is a component of the complex that binds and activates STK11/LKB1. It is required to stabilize the interaction between CAB39/MO25 (CAB39/MO25alpha or CAB39L/MO25beta) and STK11/LKB1 (PMID: 19892943).

## Storage

Storage:

Store at -20°C. Stable for one year after shipment.

Storage Buffer:

PBS with 0.02% sodium azide and 50% glycerol pH 7.3.

Aliquoting is unnecessary for -20°C storage

\*\*\* 20ul sizes contain 0.1% BSA

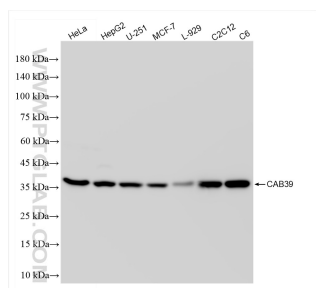
For technical support and original validation data for this product please contact:

T: 1 (888) 4PTGLAB (1-888-478-4522) (toll free in USA), or 1(312) 455-8498 (outside USA)

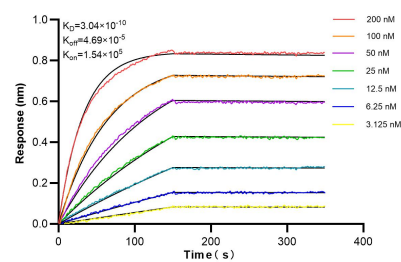
E: [proteintech@ptglab.com](mailto:proteintech@ptglab.com)  
W: [ptglab.com](http://ptglab.com)

This product is exclusively available under Proteintech Group brand and is not available to purchase from any other manufacturer.

## Selected Validation Data



Various lysates were subjected to SDS PAGE followed by western blot with 84760-4-RR (CAB39 antibody) at dilution of 1:5000 incubated at room temperature for 1.5 hours.



Biolayer interferometry (BLI) kinetic assays of 84760-4-RR against Human CAB39 were performed. The affinity constant is 0.304 nM.