

For Research Use Only

SPTAN1 Recombinant antibody, PBS Only (Detector)

Catalog Number: 84761-3-PBS



Basic Information

Catalog Number: 84761-3-PBS	GenBank Accession Number: NM_003127.3	Purification Method: Protein A purification
Size: 100ug , Concentration: 1 mg/ml by Nanodrop;	GeneID (NCBI): 6709	CloneNo.: 242104D6
Source: Rabbit	UNIPROT ID: Q13813	
Isotype: IgG	Full Name: spectrin, alpha, non-erythrocytic 1 (alpha-fodrin)	
Immunogen Catalog Number: AG36472	Calculated MW: 285kDa 2472aa	

Applications

Tested Applications:
Cytometric bead array, Sandwich ELISA, Indirect ELISA, Sample test

Species Specificity:
human

Product Information

84761-3-PBS targets SPTAN1 as part of a matched antibody pair:

MP01560-2: 84761-2-PBS capture and 84761-3-PBS detection (validated in Cytometric bead array)

MP01560-3: 84761-4-PBS capture and 84761-3-PBS detection (validated in Sandwich ELISA)

Unconjugated rabbit recombinant monoclonal antibody in PBS only (BSA and azide free) storage buffer at a concentration of 1 mg/mL, ready for conjugation. Created using Proteintech's proprietary in-house recombinant technology. Recombinant production enables unrivalled batch-to-batch consistency, easy scale-up, and future security of supply.

This conjugation ready format makes antibodies ideal for use in many applications including: ELISAs, multiplex assays requiring matched pairs, mass cytometry, and multiplex imaging applications. Antibody use should be optimized by the end user for each application and assay.

Storage

Storage:
Store at -80°C.

Storage Buffer:
PBS only, pH7.3

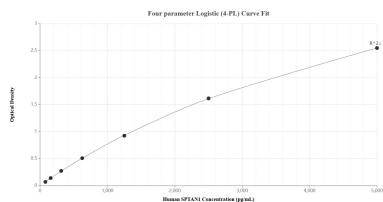
For technical support and original validation data for this product please contact:

T: 1 (888) 4PTGLAB (1-888-478-4522) (toll free in USA), or 1(312) 455-8498 (outside USA)

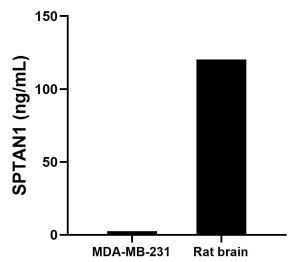
E: proteintech@ptglab.com
W: ptglab.com

This product is exclusively available under Proteintech Group brand and is not available to purchase from any other manufacturer.

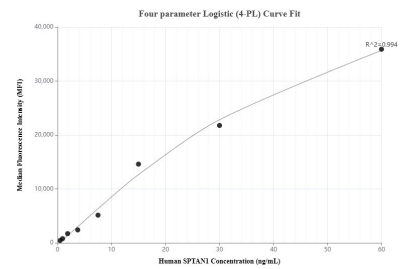
Selected Validation Data



Sandwich ELISA standard curve of MP01560-3, Human SPTAN1 Recombinant Matched Antibody Pair - PBS only. 84761-4-PBS was coated to a plate as the capture antibody and incubated with serial dilutions of standard Ag36472. 84761-3-PBS was HRP conjugated as the detection antibody. Range: 78.1-5000 pg/mL



The mean SPTAN1 concentration was determined to be 2.5 ng/mL in MDA-MB-231 cell extract based on a 1.9 mg/mL extract load and 120.3 ng/mL in rat brain tissue extract based on a 1.6 mg/mL extract load.



Cytometric bead array standard curve of MP01560-2, SPTAN1 Recombinant Matched Antibody Pair, PBS Only. Capture antibody: 84761-2-PBS. Detection antibody: 84761-3-PBS. Standard: Ag36472. Range: 0.469-60 ng/mL