

For Research Use Only

# SPTAN1 Recombinant antibody, PBS Only (Capture)

Catalog Number: 84761-4-PBS



## Basic Information

|   |   |   |
|---|---|---|
| <b>Catalog Number:</b><br>84761-4-PBS                       | <b>GenBank Accession Number:</b><br>NM_003127.3                         | <b>Purification Method:</b><br>Protein A purification |
| <b>Size:</b><br>100ug , Concentration: 1 mg/ml by Nanodrop; | <b>GeneID (NCBI):</b><br>6709   | <b>CloneNo.:</b><br>242104F11                         |
| <b>Source:</b><br>Rabbit                                    | <b>UNIPROT ID:</b><br>Q13813  |   |
| <b>Isotype:</b><br>IgG                                      | <b>Full Name:</b><br>spectrin, alpha, non-erythrocytic 1 (alpha-fodrin) |   |
| <b>Immunogen Catalog Number:</b><br>AG36472                 | <b>Calculated MW:</b><br>285kDa 2472aa                                  |   |

## Applications

**Tested Applications:**  
Sandwich ELISA, Indirect ELISA, Sample test

**Species Specificity:**  
human

## Product Information

84761-4-PBS targets SPTAN1 as part of a matched antibody pair:

MP01560-3: 84761-4-PBS capture and 84761-3-PBS detection (validated in Sandwich ELISA)

Unconjugated rabbit recombinant monoclonal antibody in PBS only (BSA and azide free) storage buffer at a concentration of 1 mg/mL, ready for conjugation. Created using Proteintech's proprietary in-house recombinant technology. Recombinant production enables unrivalled batch-to-batch consistency, easy scale-up, and future security of supply.

This conjugation ready format makes antibodies ideal for use in many applications including: ELISAs, multiplex assays requiring matched pairs, mass cytometry, and multiplex imaging applications. Antibody use should be optimized by the end user for each application and assay.

## Storage

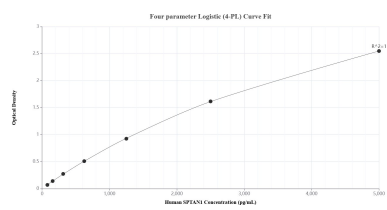
**Storage:**  
Store at -80°C.

**Storage Buffer:**  
PBS only, pH7.3

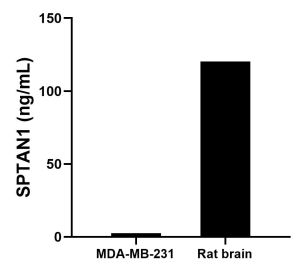
For technical support and original validation data for this product please contact:  
T: 1 (888) 4PTGLAB (1-888-478-4522) (toll free in USA), or 1(312) 455-8498 (outside USA)  
E: [proteintech@ptglab.com](mailto:proteintech@ptglab.com)  
W: [ptglab.com](http://ptglab.com)

This product is exclusively available under Proteintech Group brand and is not available to purchase from any other manufacturer.

## Selected Validation Data



Sandwich ELISA standard curve of MP01560-3, Human SPTAN1 Recombinant Matched Antibody Pair - PBS only. 84761-4-PBS was coated to a plate as the capture antibody and incubated with serial dilutions of standard Ag36472. 84761-3-PBS was HRP conjugated as the detection antibody. Range: 78.1-5000 pg/mL.



The mean SPTAN1 concentration was determined to be 2.5 ng/mL in MDA-MB-231 cell extract based on a 1.9 mg/mL extract load and 120.3 ng/mL in rat brain tissue extract based on a 1.6 mg/mL extract load.