

For Research Use Only

MAGI3 Recombinant antibody

Catalog Number: 84771-4-RR



Basic Information

Catalog Number:

84771-4-RR

Size:

100ul , Concentration: 1000 ug/ml by Nanodrop;

Source:

Rabbit

Isotype:

IgG

Immunogen Catalog Number:

AG18394

GenBank Accession Number:

BC130409

GeneID (NCBI):

260425

UNIPROT ID:

Q5TCQ9

Full Name:

membrane associated guanylate kinase, WW and PDZ domain containing 3

Calculated MW:

1481 aa, 163 kDa

Observed MW:

140 kDa

Purification Method:

Protein A purification

CloneNo.:

242212C9

Recommended Dilutions:

WB 1:5000-1:50000

IF-P 1:200-1:800

Applications

Tested Applications:

WB, IF-P, ELISA

Species Specificity:

human, mouse, rat

Positive Controls:

WB : mouse brain tissue, rat brain tissue

IF-P : mouse brain tissue,

Background Information

MAGI proteins are scaffolding proteins, belonging to the Membrane-Associated Guanylate Kinase Inverted proteins of the MAGUK family. There are three members of the MAGI subfamily, MAGI-1, MAGI-2, and MAGI-3. They are comprised of 6 PDZ domains, 2 WW domains, and 1 GUK domain. They have been proven to mediate the transport and signal transduction of various G protein-coupled receptors (GPCRs) (PMID: 29625175). The antibody is specific to MAGI3.

Storage

Storage:

Store at -20°C. Stable for one year after shipment.

Storage Buffer:

PBS with 0.02% sodium azide and 50% glycerol pH 7.3.

Aliquoting is unnecessary for -20°C storage

*** 20ul sizes contain 0.1% BSA

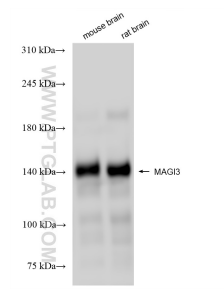
For technical support and original validation data for this product please contact:

T: 1 (888) 4PTGLAB (1-888-478-4522) (toll free in USA), or 1(312) 455-8498 (outside USA)

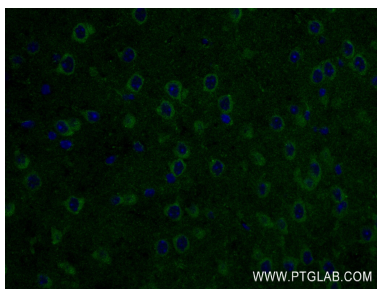
E: proteintech@ptglab.com
W: ptglab.com

This product is exclusively available under Proteintech Group brand and is not available to purchase from any other manufacturer.

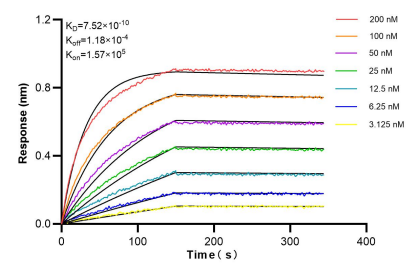
Selected Validation Data



Various lysates were subjected to SDS PAGE followed by western blot with 84771-4-RR (MAGI3 antibody) at dilution of 1:10000 incubated at room temperature for 1.5 hours.



Immunofluorescent analysis of (4% PFA) fixed paraffin-embedded mouse brain tissue using MAGI3 antibody (84771-4-RR, Clone: 242212C9) at dilution of 1:400 and CoraLite®488-Conjugated Goat Anti-Rabbit IgG(H+L) (SA00013-2). Heat mediated antigen retrieval with Tris-EDTA buffer (pH 9.0).



Biolayer interferometry (BLI) kinetic assays of 84771-4-RR against Human MAGI3 were performed. The affinity constant is 0.752 nM.